

House Only
FROM \$448,043

Jennian
HOMES



Edward 4 House Plan | Tauranga | House Only

 4	 2	 1	 2	 1
---	---	---	---	---

Build Your Dream Home – 134.7m² of Modern Family Living on Your Land

Already own land in the Bay Of Plenty and ready to build? This stunning 134.7m² new build is designed for comfort, energy efficiency, and effortless living – perfect for families who want room to grow and entertain.

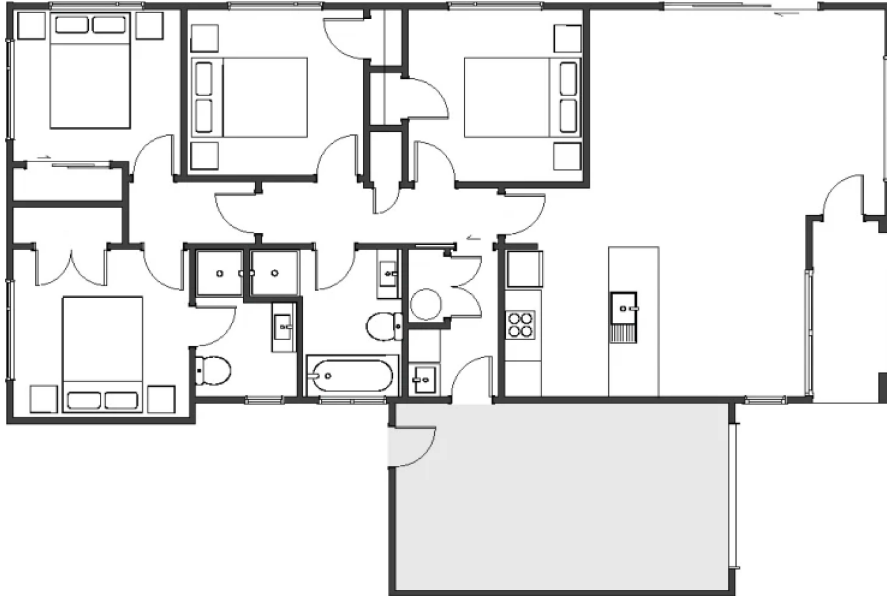
The Edward 4 House Plan Features: 4 generous bedrooms, 2 stylish bathrooms, Open-plan living and a Single car garage for secure parking and extra storage.

Tauranga & Western BOP
180 Fifteenth Avenue, Tauranga
jennian.co.nz

Sales Enquiry
P 07 925 9800
E tauranga@jennian.co.nz

Edward 4 House Plan | Tauranga | House Only

134.70m² | 4 bdrms



Living Area	134.7 m ²
Home Width	10.7 m
Home Length	16.2 m

The images may show features which may not be included in the standard plan or price. Your local Jennian New Home Consultant will confirm standard features and discuss your ideas. All plans remain the copyright of Jennian Homes.