






House and Land Package

FROM \$725,000

Jennian
HOMES



Ashbury Grove House & Land (Lot 31)

 3	 2	 2	 2	 2
---	---	---	---	---

An opportunity to stamp your name on your family's future with a new home in Ashbury Grove, Ashburton's latest residential subdivision. This sleek and stylish new home boasts three double bedrooms with generous wardrobe space and includes master bedroom with walk in robe, ensuite, and access to the outdoor patio.

Package Includes:

Interior Joinery & Colour Consultation
Fisher & Paykel Appliances
Panasonic Heatpump with Wi-Fi
Hard Landscaping (Vehicle Crossing, Driveway, Patios)
10yr Master Build Guarantee
36mth Defects Warranty

Canterbury

212 Main South Road, Sockburn, Christchurch

P 03 741 1436

E canterbury@jennian.co.nz

jennian.co.nz

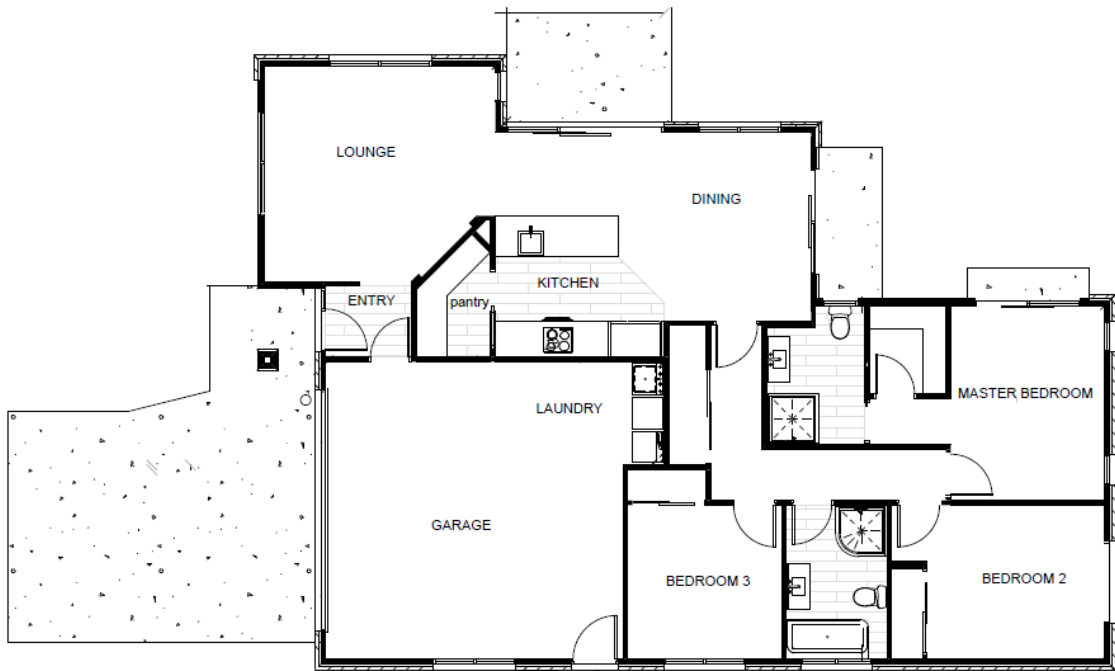
Michele Strange

P 027 491 5266

E michele.strange@jennian.co.nz

Ashbury Grove House & Land (Lot 31)

159.10m² | 3 bdr



Living Area	125.5 m ²
Garage Area	33.6 m ²
Total Floor Area	159.1 m²
Home Width	12.1 m
Home Length	16.9 m
Land Area	650 m ²

The images may show features which may not be included in the standard plan or price. Your local Jennian New Home Consultant will confirm standard features and discuss your ideas. All plans remain the copyright of Jennian Homes.