



## Display Home Wanaka

 3	 2	 1	 2	 1
---	---	---	---	---

The Aspiring, a modern Jennian design, gives our Display Home a sophisticated and spacious feel. Completed with quality fixtures and fittings throughout, this home has an aspirational flare with a practical floor plan. This home features three double bedrooms, two bathrooms, a separate WC, extended single garage and multiple storage options. The generous decking creates a practical indoor-outdoor flow to utilise the living spaces, including the lake and mountain views. The home boasts extra features including skylights, a fireplace, multiple tiled areas, Stopsol thermal glass splashback and a raked ceiling in the living area, creating an open feeling you'd love coming home to.

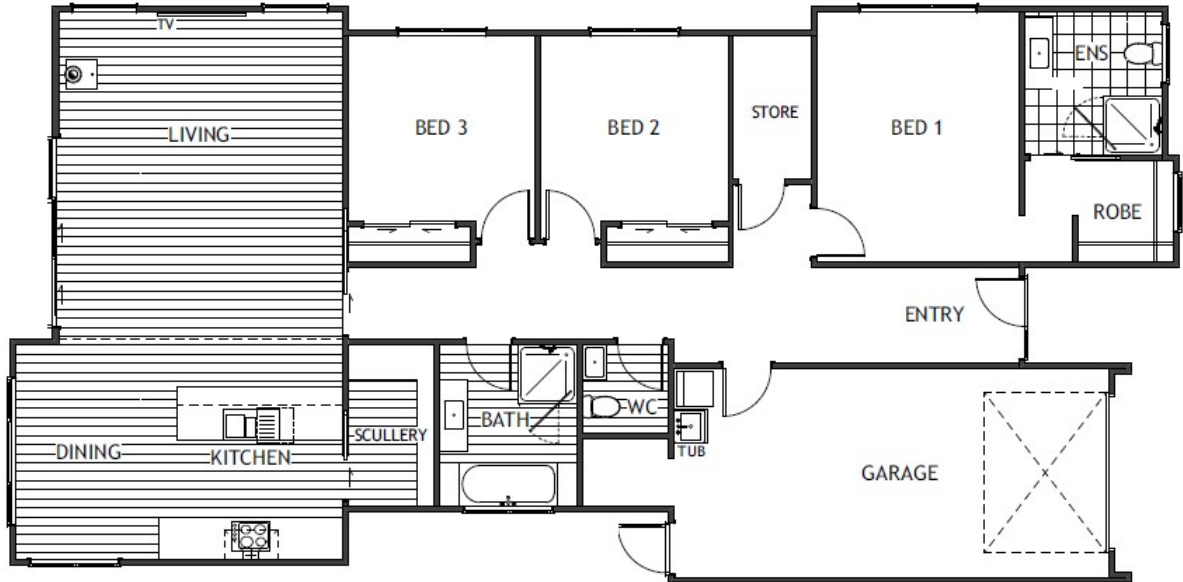
### Wanaka

2/64 Mount Linton Ave, Northlake, Wanaka 9305

**P** 021 198 3108

**E** wanaka@jennian.co.nz

**jennian.co.nz**



The images may show features which may not be included in the standard plan or price. Your local Jennian New Home Consultant will confirm standard features and discuss your ideas. All plans remain the copyright of Jennian Homes.