






House and Land Package

FROM \$839,000

Jennian
HOMES



Ready to Call Rolleston Home?

 3	 2	 2	 2	 1
---	---	---	---	---

This sleek and stylish new home boasts three double bedrooms with generous wardrobe space and includes master bedroom with walk in robe, ensuite, and access to the outdoor patio.

The package includes:

156m² House

522m² Land

Interior Joinery & Colour consultation

Fisher & Paykel Appliances

Panasonic Heatpump

Clothesline & Letterbox

Spacious Double Garage

Hard Landscaping (Vehicle Crossing, Driveway, Patios)

10yr Master Build Guarantee & 36mth Defect Warranty

Canterbury

212 Main South Road, Sockburn, Christchurch

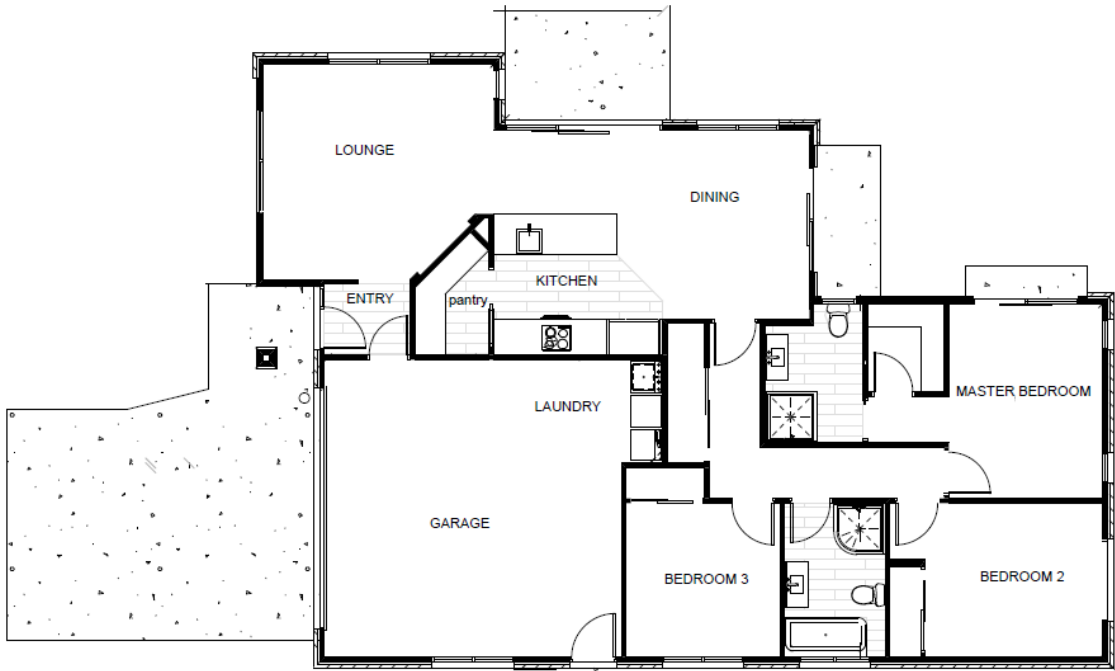
P 03 741 1436

E canterbury@jennian.co.nz

jennian.co.nz

Ready to Call Rolleston Home?

156.00m² | 3 bdrm



Living Area 156 m²

Home Width 12 m

Home Length 17 m

Land Area 522 m²

The images may show features which may not be included in the standard plan or price. Your local Jennian New Home Consultant will confirm standard features and discuss your ideas. All plans remain the copyright of Jennian Homes.