






# House and Land Package

FROM \$1,016,000

**Jennian**  
HOMES



## Lot 83 Sunderland Park Clyde

 3	 2	 2	 2	 2
---	---	---	---	---

This House and Land package in Sunderland Park features a carefully considered three-bedroom design with all the modern conveniences sought by the growing family. This three-bedroom home features large open dining and living areas, plus a formal lounge perfect for five-star hospitality. The generous master bedroom doubles as a parental retreat and boasts a walk-in wardrobe plus ensuite.

- Jennian Homes is NZ's most awarded home group building company.

- Included – Driveway and Patio allocation of 80m2 of Exposed Aggregates

### Central Otago and Queenstown

37 Jack Hanley Drive, Hanleys Farm, Queenstown

P 03 746 7263

E [central.otago@jennian.co.nz](mailto:central.otago@jennian.co.nz)

[jennian.co.nz](http://jennian.co.nz)

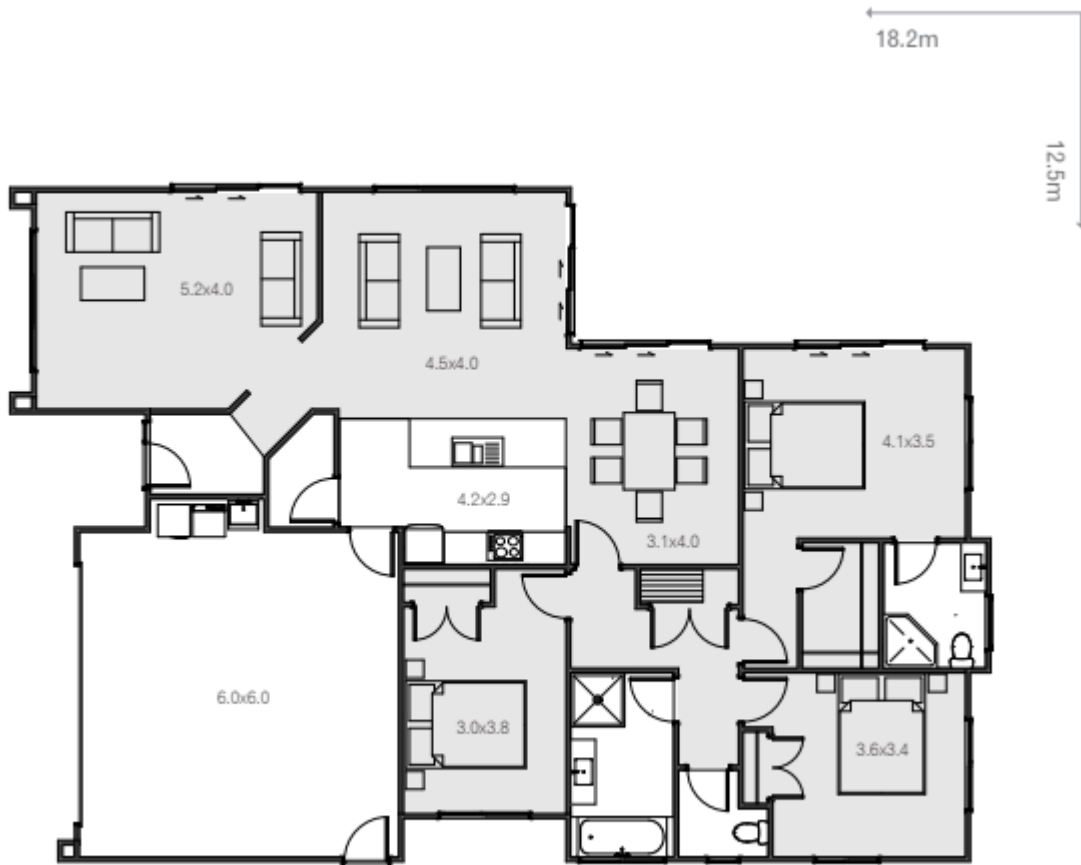
### Anita Johnson

P 022 048 2309

E [anita.johnson@jennian.co.nz](mailto:anita.johnson@jennian.co.nz)

# Lot 83 Sunderland Park Clyde

185.00m<sup>2</sup> | 3 bdrm



Living Area	147 m <sup>2</sup>
Garage Area	38 m <sup>2</sup>
<b>Total Floor Area</b>	<b>185 m<sup>2</sup></b>
Home Width	12.5 m
Home Length	18.19 m
Land Area	475 m <sup>2</sup>

The images may show features which may not be included in the standard plan or price. Your local Jennian New Home Consultant will confirm standard features and discuss your ideas. All plans remain the copyright of Jennian Homes.