

# House and Land Package






**FROM \$785,000**

**Jennian**  
HOMES



## **Lot 5, 49 Poole Street, Motueka**

An open living plan with breakfast bar and dining area. Spacious living area and double garage are a real feature of this great house design. With a close location to the town center this home is the perfect fit for a professional couple.

 2	 1	 2	 1	 2
---	---	---	---	---

---

### **Nelson Bays**

8 Champion Road (The Livibrook Complex), Richmond, Nelson 7020

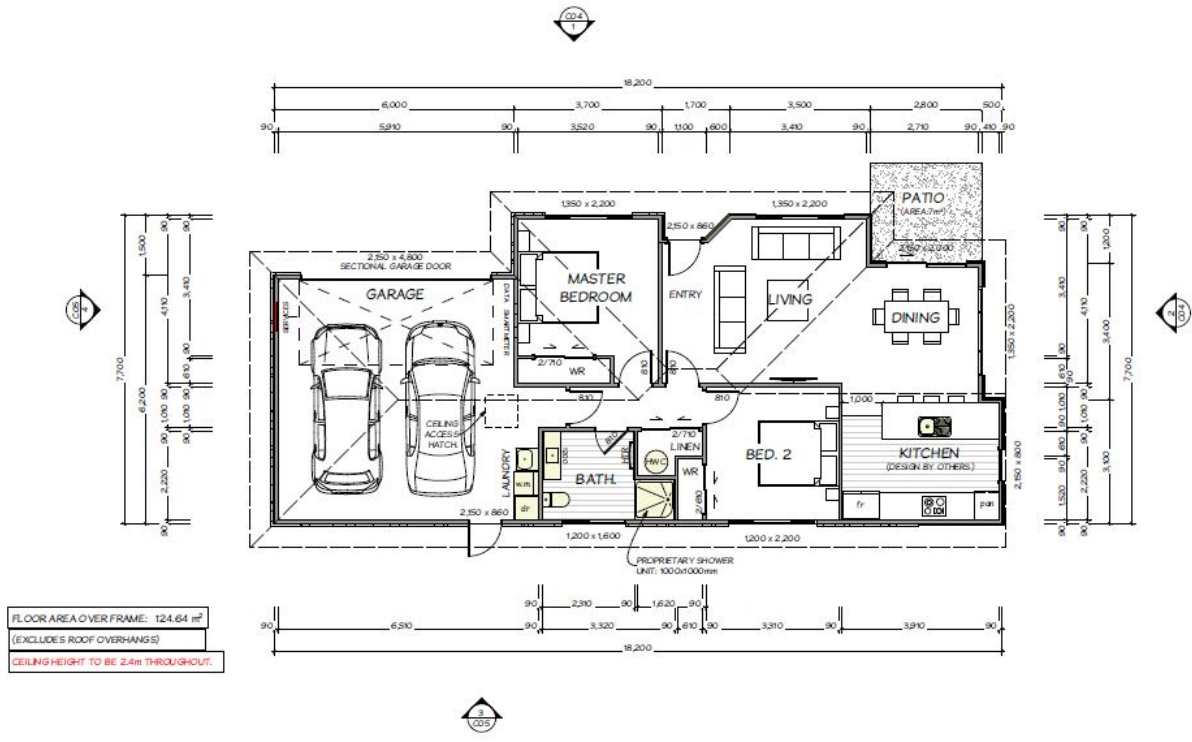
**P** 03 544 4390

**E** [nelson@jennian.co.nz](mailto:nelson@jennian.co.nz)

**jennian.co.nz**

# Lot 5, 49 Poole Street, Motueka

124m<sup>2</sup> | 2 bdrms



Living Area	124 m <sup>2</sup>
Land Area	460 m <sup>2</sup>

The images may show features which may not be included in the standard plan or price. Your local Jennian New Home Consultant will confirm standard features and discuss your ideas. All plans remain the copyright of Jennian Homes.