




# House and Land Package

**FROM \$999,500**

**Jennian**  
HOMES



## 180 Adler Drive, Ohauti

 3	 2	 2	 2	 1
---	---	---	---	---

Here's an affordable house & land package in a sought after Subdivision that is sure to appeal to families and investors alike. This brand new Jennian Home in a central Tauranga ticks all the boxes for those trying to get into the property market. The 174m<sup>2</sup> brick and linea home has plenty of content, including 2 large north west facing living areas , designer Kitchen with a scullery and quality appliances. 2 bathrooms and 3 large double bedrooms complete the package. The flat 405m<sup>2</sup> section (Lot 180) will be Titled shortly and is in a prominent position in the popular 3 Creeks subdivision in Ohauti.

### Tauranga & Western BOP

180 Fifteenth Avenue, Tauranga

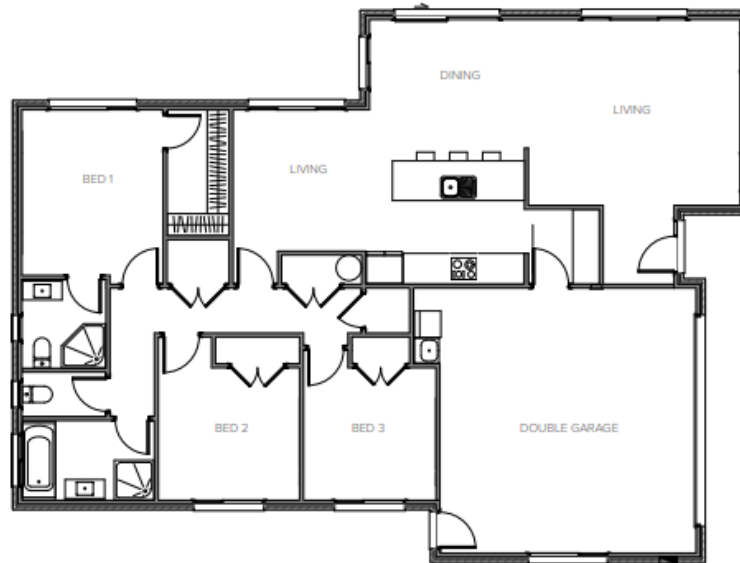
**P** 07 925 9800

**E** [Matt.Watts@jennian.co.nz](mailto:Matt.Watts@jennian.co.nz)

[jennian.co.nz](http://jennian.co.nz)

# 180 Adler Drive, Ohauti

173m<sup>2</sup> | 3 bdr



Living Area	135 m <sup>2</sup>
Garage Area	38 m <sup>2</sup>
<b>Total Floor Area</b>	<b>173 m<sup>2</sup></b>
Home Width	12 m
Home Length	16 m
Land Area	405 m <sup>2</sup>

The images may show features which may not be included in the standard plan or price. Your local Jennian New Home Consultant will confirm standard features and discuss your ideas. All plans remain the copyright of Jennian Homes.