






House and Land Package

POA

Jennian
HOMES



Turnkey House & Land in Methven

 4	 2	 2	 2	 3
---	---	---	---	---

PACKAGE INCLUDES:

10% deposit, balance on completion (Turnkey package)
House completion expected August/September 2022!
203m² house including alfresco
4 Double Bedrooms & 2 bathrooms
Feature ceiling heights in lounge & entry
Designer Kitchen with Tristone Benchtop & Walk-in Pantry
Quality chattels including dishwasher, oven & rangehood
1x heatpump
Clothesline & Letterbox
Boundary fencing included
60m² Hard Landscaping included (Vehicle crossing, Driveway, Path & Patios)

Canterbury

212 Main South Road, Sockburn, Christchurch

P 03 741 1436

E canterbury@jennian.co.nz

jennian.co.nz

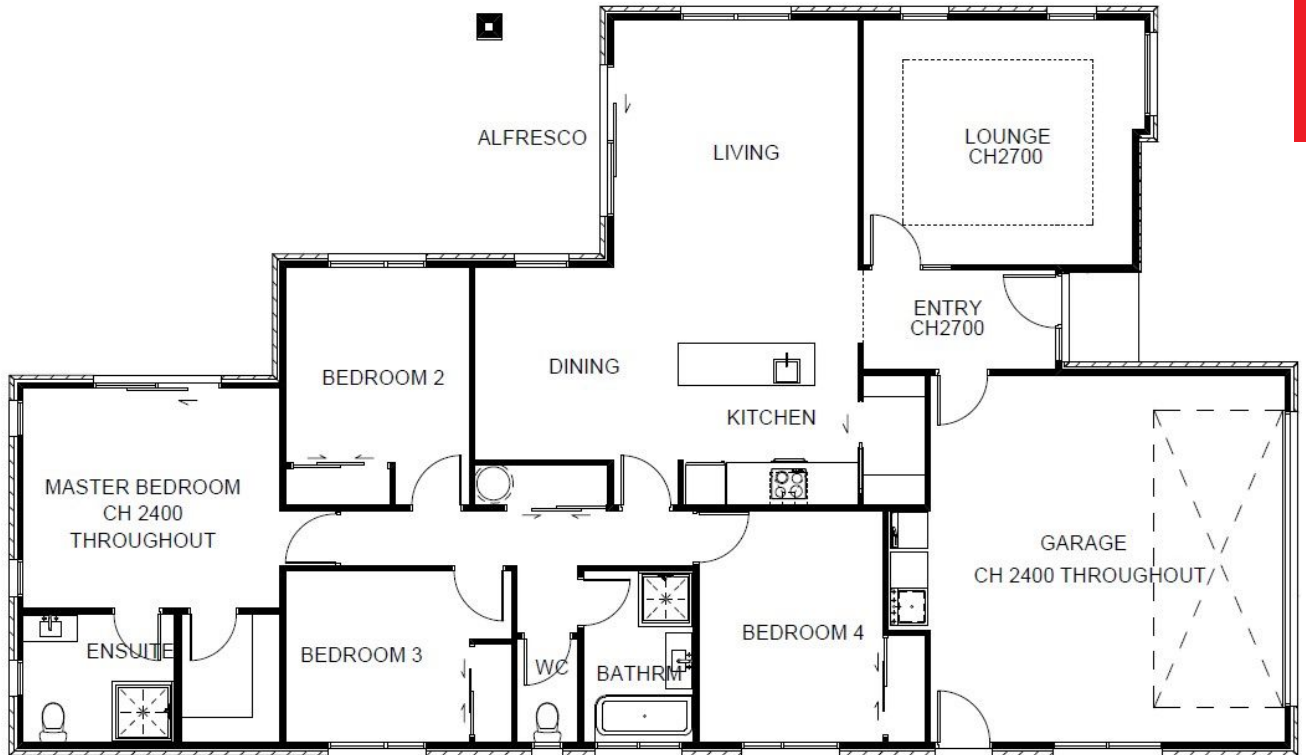
Darren Kim

P 027 899 7000

E Darren.Kim@jennian.co.nz

Turnkey House & Land in Methven

203m² | 4 bdr



Living Area

203 m²

The images may show features which may not be included in the standard plan or price. Your local Jennian New Home Consultant will confirm standard features and discuss your ideas. All plans remain the copyright of Jennian Homes.