



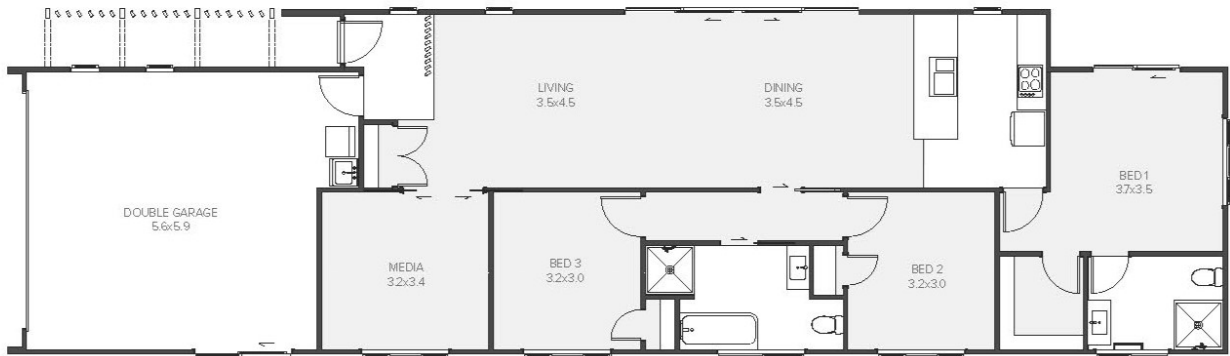
## Catalina

 3	 2	 2	 2	 2
---	---	---	---	---

The Catalina offers an elegant fusion of open-plan living and clever space utilisation, crafting a modern and stylish three-bedroom home that's perfectly suited to narrow sites. The living area seamlessly connects with the dining area, kitchen, and outdoor entertainment space, perfect for entertaining family and friends while the addition of a media room also provides a versatile space that can effortlessly transform into guest accommodation. The spacious master bedroom features an ensuite bathroom, a large walk-in wardrobe, and a slider that opens up to a private patio area. Designed with your lifestyle in mind, The Catalina is the perfect balance of style and practicality and comfort.

# Catalina

160.14m<sup>2</sup> | 3 bdrm



Living Area	122.3 m <sup>2</sup>
Garage Area	37.84 m <sup>2</sup>
<b>Total Floor Area</b>	<b>160.14 m<sup>2</sup></b>
Home Width	7 m
Home Length	24.8 m

The images may show features which may not be included in the standard plan or price. Your local Jennian New Home Consultant will confirm standard features and discuss your ideas. All plans remain the copyright of Jennian Homes.