






House and Land Package

FROM \$1,000,020

Jennian
HOMES



Stunning Sabys Estate House and Land Package (Lot 26)

 3	 2	 2	 2	 2
---	---	---	---	---

Titles due July 2022

Lot 26, Sabys Estate, Halswell includes:

Section size 507m²

3 Bedrooms and two bathrooms

Study nook

Designer Kitchen with Tristone Benchtop & Walk-in Pantry

F&P Appliances incl. Induction Cooktop

Clothesline & Letterbox included

Hard Landscaping included (Vehicle crossing, Driveway, Path & Patios)

Canterbury

212 Main South Road, Sockburn, Christchurch

P 03 741 1436

E canterbury@jennian.co.nz

jennian.co.nz

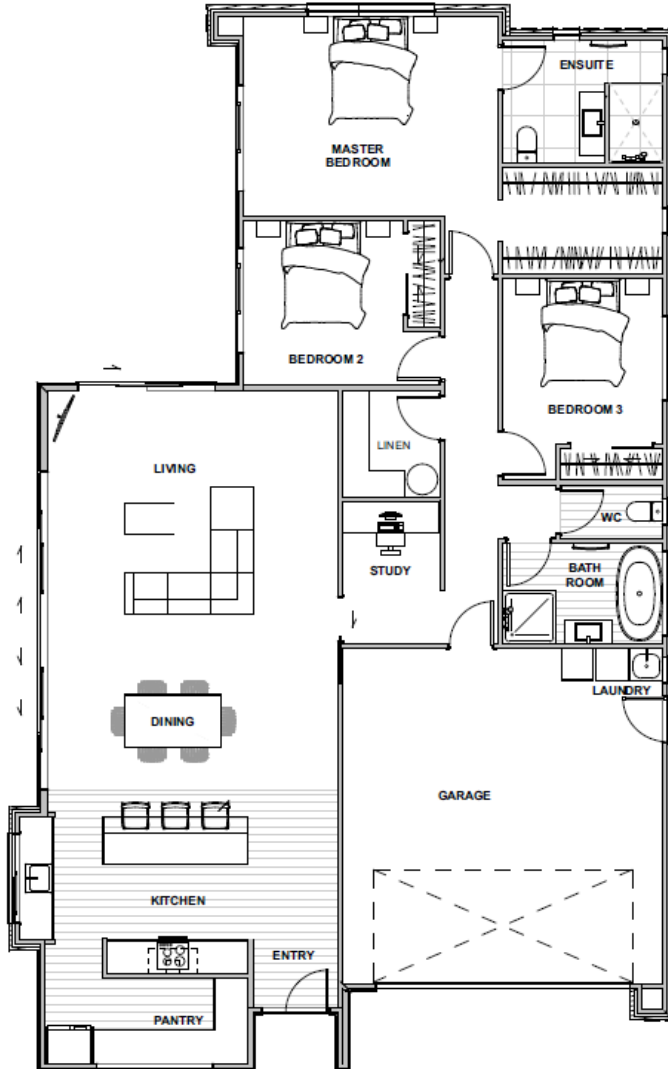
Eric Briggs

P 027 766 3776

E Eric.Briggs@jennian.co.nz

Stunning Sabys Estate House and Land Package (Lot 26)

201m² | 3 bdrm



Living Area 201 m²

Home Width 12 m

Home Length 19 m

Land Area 507 m²

The images may show features which may not be included in the standard plan or price. Your local Jennian New Home Consultant will confirm standard features and discuss your ideas. All plans remain the copyright of Jennian Homes.