

# House and Land Package






## FROM \$639,000

**Jennian**  
HOMES



## Westport House and Land Package

This house and land package at Kawatiri Place is located down a quiet lane in a nice private location. It is a perfect family home offering great indoor/outdoor flow with 3 bedrooms and 2 bathrooms.

 3	 2	 2	 2	 1
---	---	---	---	---

### West Coast

128 Palmerston Street, Westport 7825

**P** 03 789 5050

**E** [westcoast@jennian.co.nz](mailto:westcoast@jennian.co.nz)

[jennian.co.nz](http://jennian.co.nz)

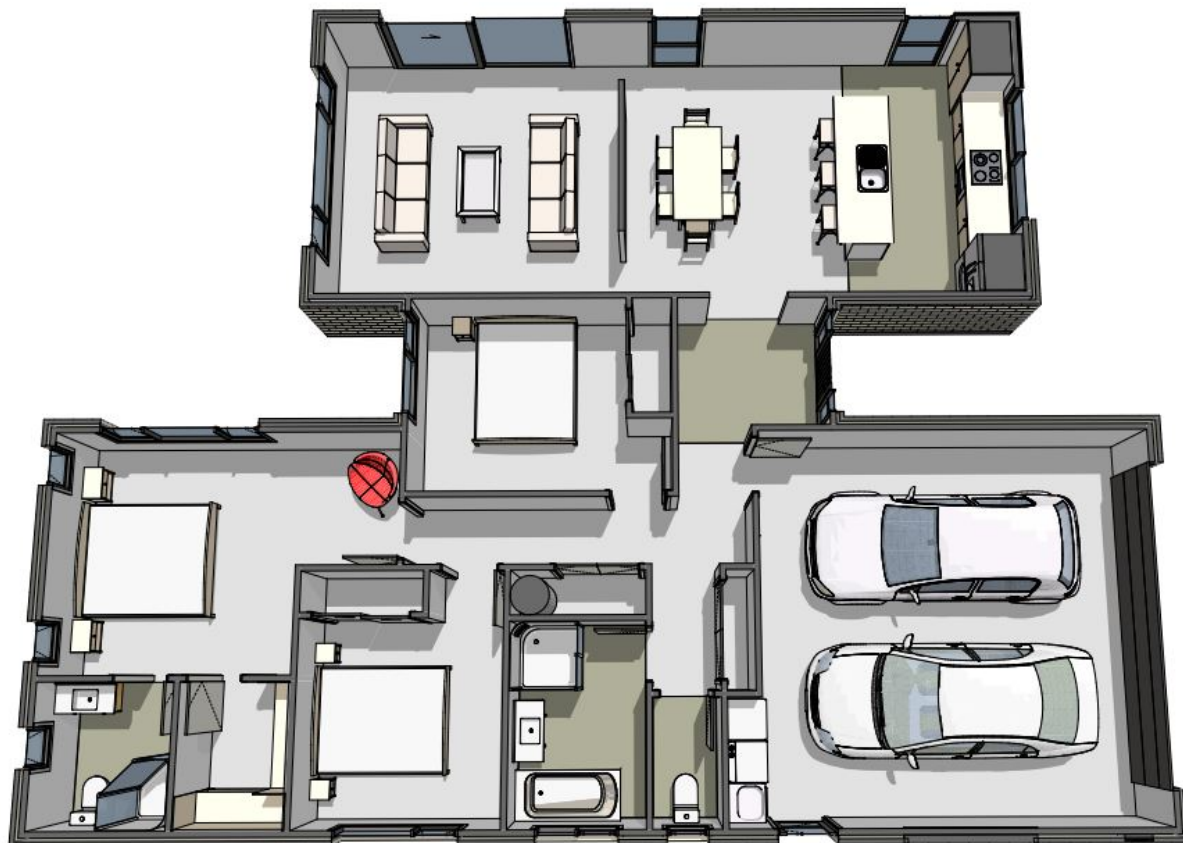
### Felicity Watson

**P** 027 284 0492

**E** [felicity.watson@jennian.co.nz](mailto:felicity.watson@jennian.co.nz)

# Westport House and Land Package

166.00m<sup>2</sup> | 3 bdrm



Living Area 166 m<sup>2</sup>

Land Area 1124 m<sup>2</sup>

The images may show features which may not be included in the standard plan or price. Your local Jennian New Home Consultant will confirm standard features and discuss your ideas. All plans remain the copyright of Jennian Homes.