






4 Sunline Drive Pukekura, Cambridge Display Home

 5	 5	 3	 5	 3
---	---	---	---	---

At the heart of the home, the spacious open plan living, dining area and a designer kitchen, complete with a scullery that would rival most kitchens. Separate media room with sunken floor take movie nights to next level. Having as many bathrooms as it does bedrooms, four with ensuites, this five-bedroom home offers flexible living that will suit a variety of lifestyles. Guest suite, gym, separate laundry, reading nook and internal access triple garaging complete the downstairs picture. Ascend the sweeping staircase, to find the remaining four bedrooms, family bathroom and home office. The sprawling master suite is the ideal couple's retreat, enjoy the panorama out to Maungatautari or relax in the free-standing bath at the end of a long day.

Waikato - Hamilton and Cambridge

Studio J, 502 Grey Street, Hamilton 3216

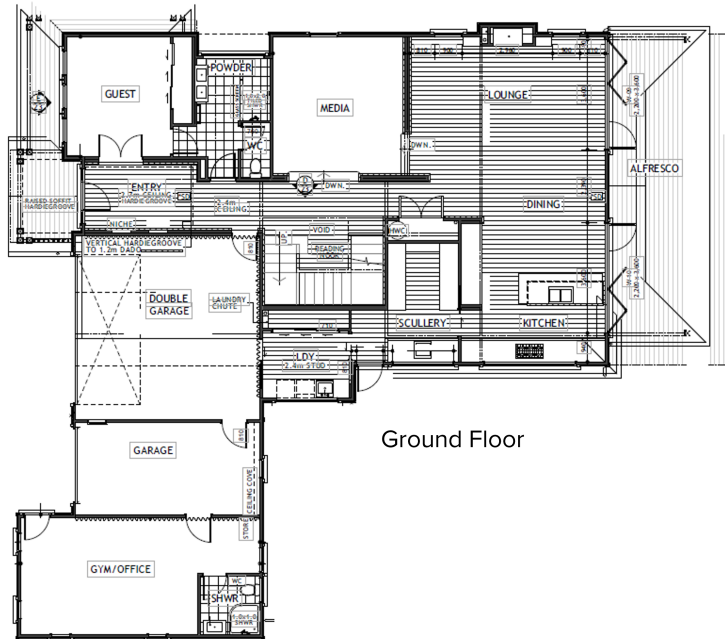
P 07 949 7770

E Waikato@jennian.co.nz

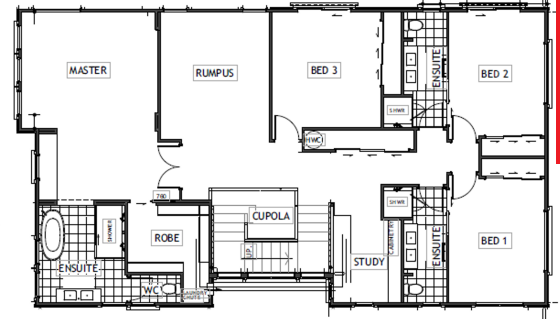
jennian.co.nz

4 Sunline Drive Pukekura, Cambridge Display Home

414.69m² | 5 bdrm



Ground Floor



First Floor

Living Area	358.67 m ²
Garage Area	56.02 m ²
Total Floor Area	414.69 m²
Home Width	20.01 m
Home Length	17.79 m

The images may show features which may not be included in the standard plan or price. Your local Jennian New Home Consultant will confirm standard features and discuss your ideas. All plans remain the copyright of Jennian Homes.