








## 82 Berryfield Drive, Richmond

 3	 2	 2	 3	 2
---	---	---	---	---

This home is a showstopper, cleverly designed to meet subdivision requirements yet provide expansive private living within 244sqm. Sitting between two pavilions is a welcoming entranceway that invites you down the wide Kwila boardwalk and into the lobby. The pavilion-style layout allows for the separation of living and sleeping areas. To one side, the light and luxurious main suite is simply sublime with high ceilings and sliders that open up an entire wall to a Kwila-decked outdoor area.

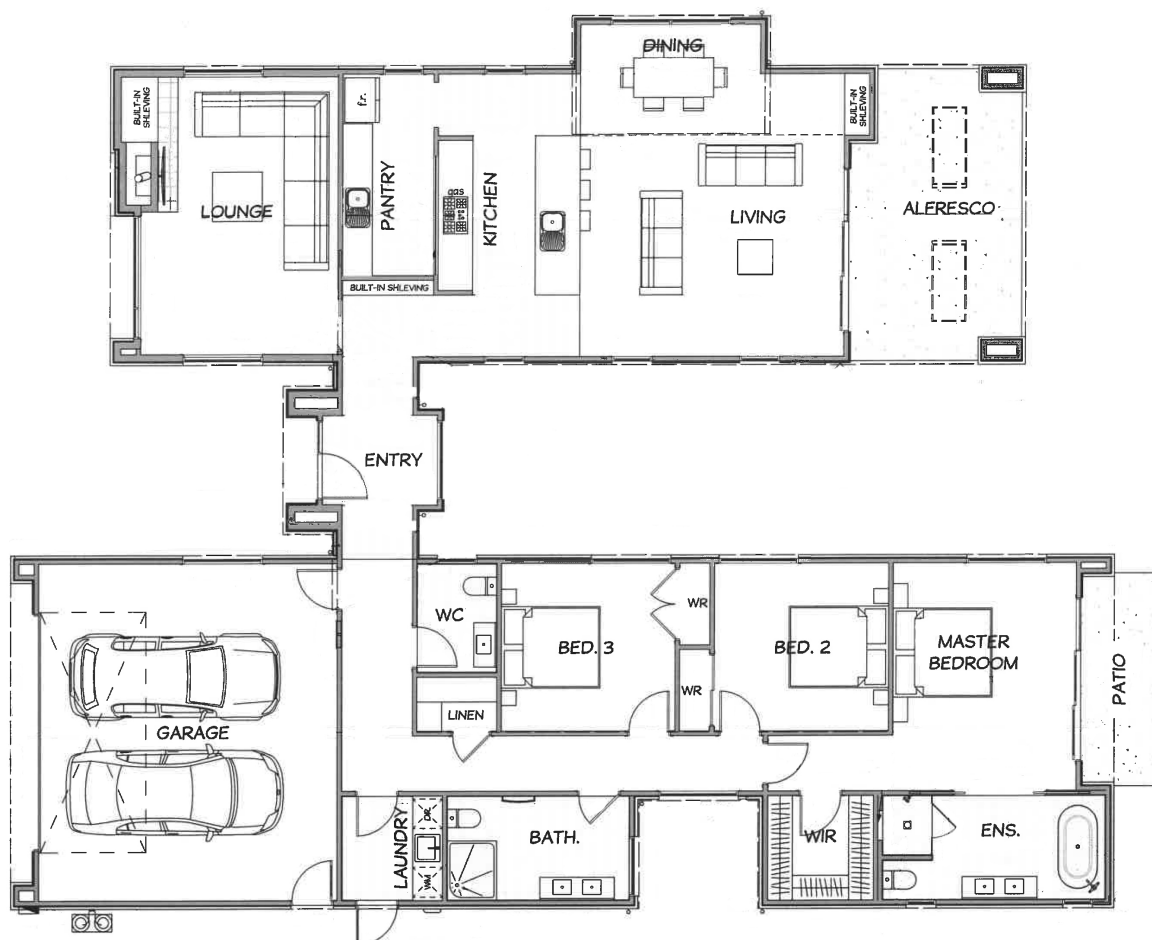
### Nelson Bays

8a Champion Road Richmond (Livi brook Complex)

P 03 544 4390

E [nelson@jennian.co.nz](mailto:nelson@jennian.co.nz)

[jennian.co.nz](http://jennian.co.nz)



Living Area

244 m<sup>2</sup>

The images may show features which may not be included in the standard plan or price. Your local Jennian New Home Consultant will confirm standard features and discuss your ideas. All plans remain the copyright of Jennian Homes.