

House and Land Package

FROM \$845,000

Jennian
HOMES



McHutcheson Way, Twizel, Mackenzie, Canterbury

An awesome opportunity in Twizel - heart of the Mackenzie! Where a Jennian house and land package awaits you at popular Four Lakes. There has been strong demand for properties in Four Lakes and this 1003m² section (Lot 50) is one of the last available. Be in quick to secure you next permanent, or holiday home.

 4	 2	 2	 2	 2
---	---	---	---	---

Otago

39 Otaki Street, Dunedin 9012

P 03 477 6912

E dunedin@jennian.co.nz

jennian.co.nz

Debbie Payne

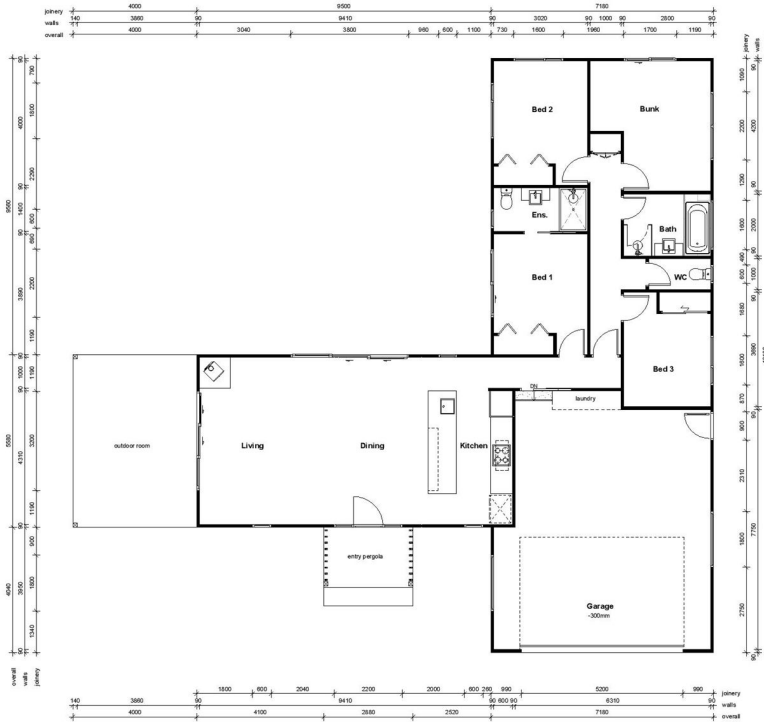
P 021 979 943

E debbie.payne@jennian.co.nz

McHutcheson Way, Twizel, Mackenzie, Canterbury

190m² | 4 bdrm

Concept / Pricing



Floor Framing Plan

DK ARCHITECTURE
07 434 4339
02 480 1261
info@dkarchitect.co.nz

ARZ
Professional Member



Job Title
Do not make alterations. DK ARCHITECTURE Limited retains copyright in all documentation.

Project Location		Scale	Drawn	Author	Revisions / Permits
Ref	Description	Date	Project No.	Project Number	
	Revision Schedule	Issued			

DRAFT - 2019-12-19

Floor Plan

2.1

Living Area 190 m²

Land Area 1003 m²

The images may show features which may not be included in the standard plan or price. Your local Jennian New Home Consultant will confirm standard features and discuss your ideas. All plans remain the copyright of Jennian Homes.