



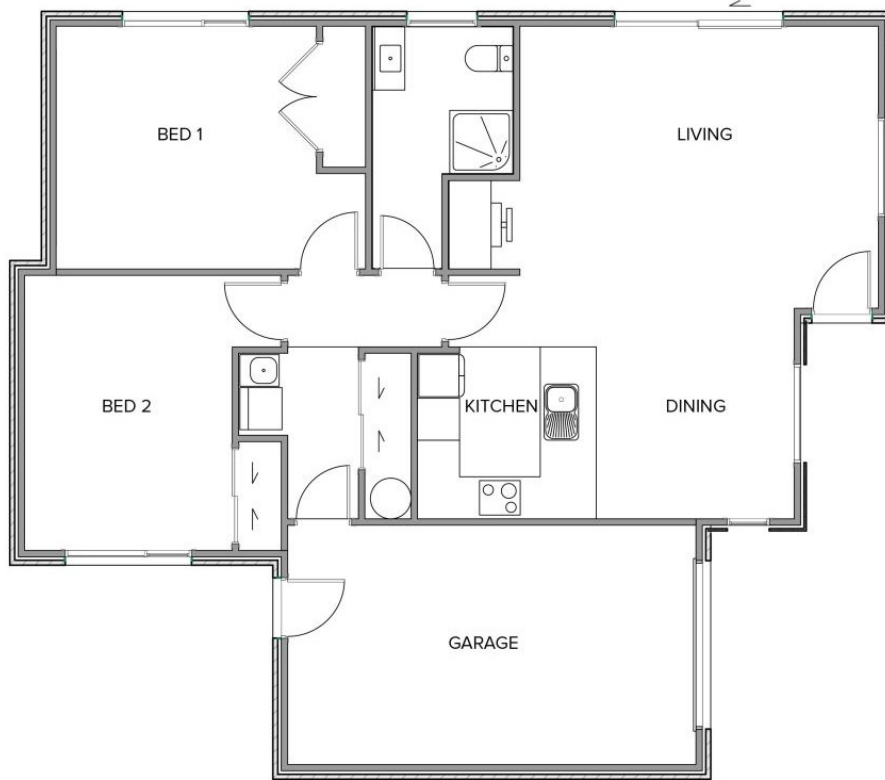
Edward 2

 2	 1	 1	 1	 1
---	---	---	---	---

Our cleverly designed modern two bedroom Edward house plan is a functional home that is designed to maximise space and cost efficiency. The plan features two well-proportioned bedrooms an open plan kitchen, dining and living area.

Edward 2

111.49m² | 2 bdrms



Living Area	90.49 m ²
Garage Area	21 m ²
Total Floor Area	111.49 m²
Home Width	10.7 m
Home Length	12.35 m

The images may show features which may not be included in the standard plan or price. Your local Jennian New Home Consultant will confirm standard features and discuss your ideas. All plans remain the copyright of Jennian Homes.