




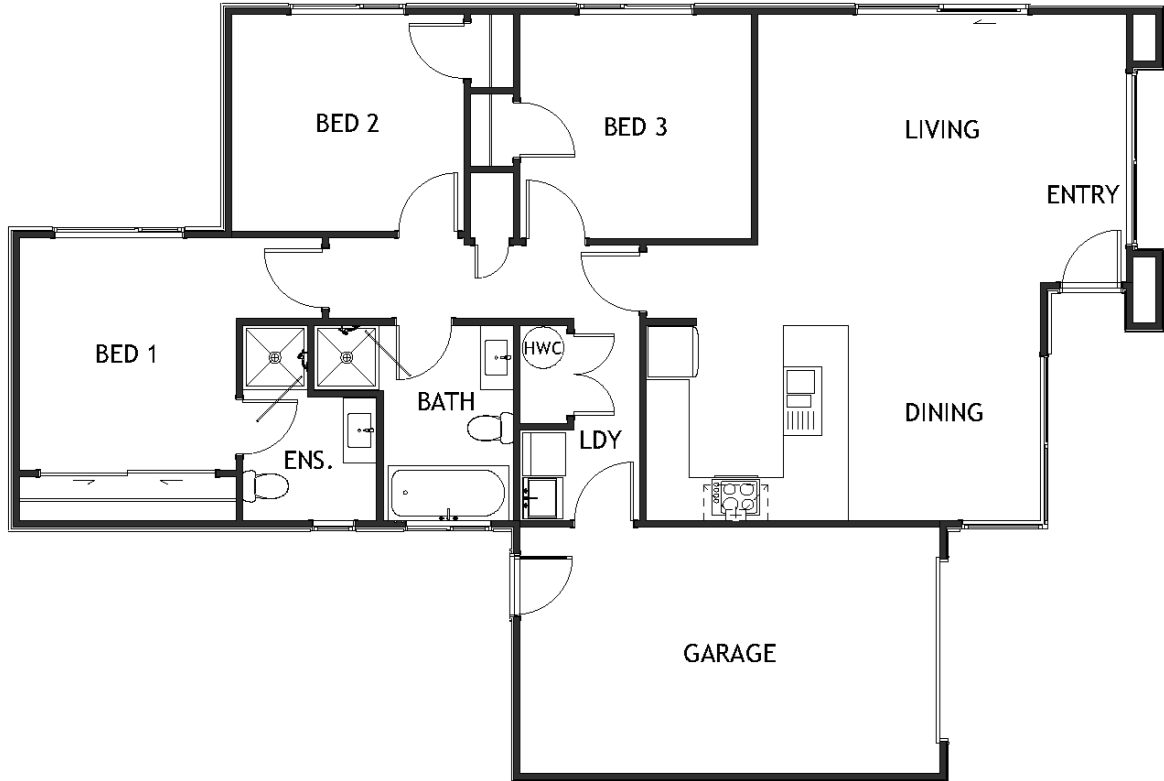
Edward 3

 3	 2	 1	 2	 1
---	---	---	---	---

This cleverly designed modern 3-bedroom Edward house plan is the perfect home for a growing family. With its open-plan kitchen, dining, and living area, this home is perfect for entertaining guests or spending time together as a family. The master bedroom features an ensuite bathroom, giving you the ultimate in privacy and relaxation.

Edward 3

126.58m² | 3 bdrm



Living Area	103.99 m ²
Garage Area	22.59 m ²
Total Floor Area	126.58 m²
Home Width	10.7 m
Home Length	15.95 m

The images may show features which may not be included in the standard plan or price. Your local Jennian New Home Consultant will confirm standard features and discuss your ideas. All plans remain the copyright of Jennian Homes.