








## Alexandra

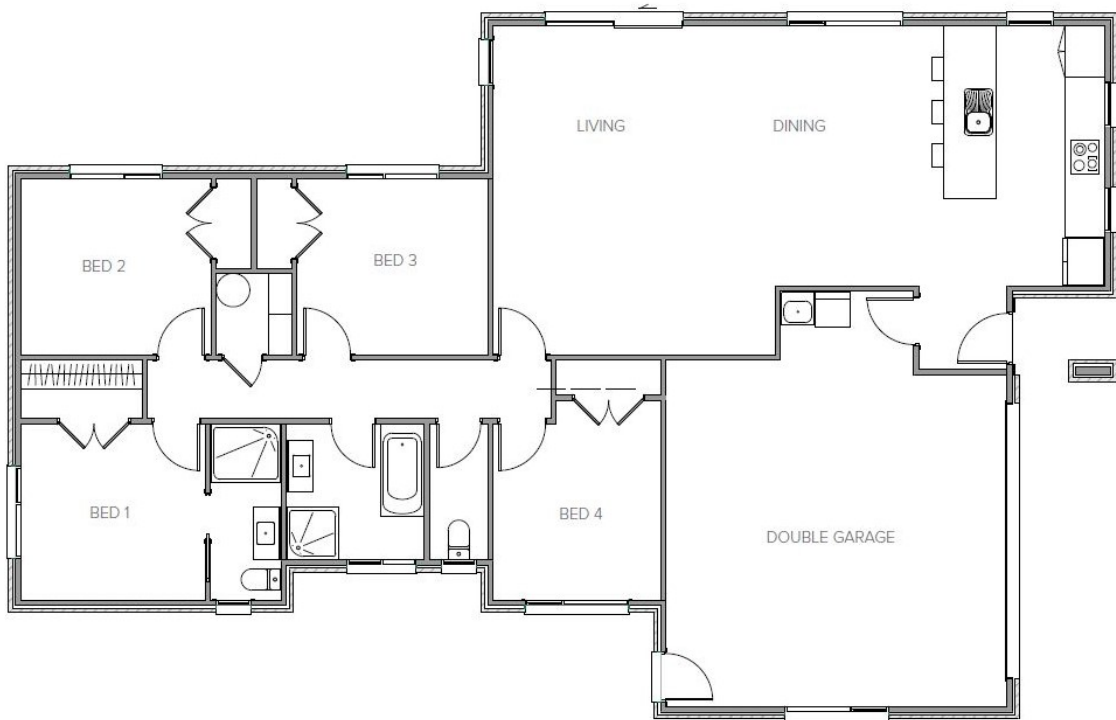
Sit back and enjoy the good life in this open plan four bedroom home.

The intelligent layout of our Alexandra plan creates ideal living areas for the whole family at an affordable price.

 4	 2	 2	 2	 2
---	---	---	---	---

# Alexandra

173.61m<sup>2</sup> | 4 bdrm



Living Area 134.29 m<sup>2</sup>

Garage Area 39.32 m<sup>2</sup>

**Total Floor Area 173.61 m<sup>2</sup>**

Home Width 12.25 m

Home Length 19.54 m

The images may show features which may not be included in the standard plan or price. Your local Jennian New Home Consultant will confirm standard features and discuss your ideas. All plans remain the copyright of Jennian Homes.