








## Ravenswood Display Home

 3	 2	 2	 2	 1
---	---	---	---	---

If a sun-drenched three-bedroom home with strong, modern lines is what you've been looking for, this show home should be on your must-see list. This 198sqm property has been designed with a layout that ensures the living and bedrooms harness light and warmth, and that indoor-outdoor movement is easy and natural. The designer kitchen is set up for entertaining. The lounge – part of the open-plan configuration – can be closed off from the kitchen and dining areas. The use of muted and stronger grey hues throughout makes the house relaxing, but no more so than in the main bedroom suite, which has a walk-in wardrobe and an ensuite with the feel of a spa retreat. On the outside, Linea weatherboards in two different shades, both horizontal and vertical, create street appeal.

### Canterbury

212 Main South Road, Sockburn, Christchurch

**P** 03 741 1436

**E** canterbury@jennian.co.nz

**jennian.co.nz**

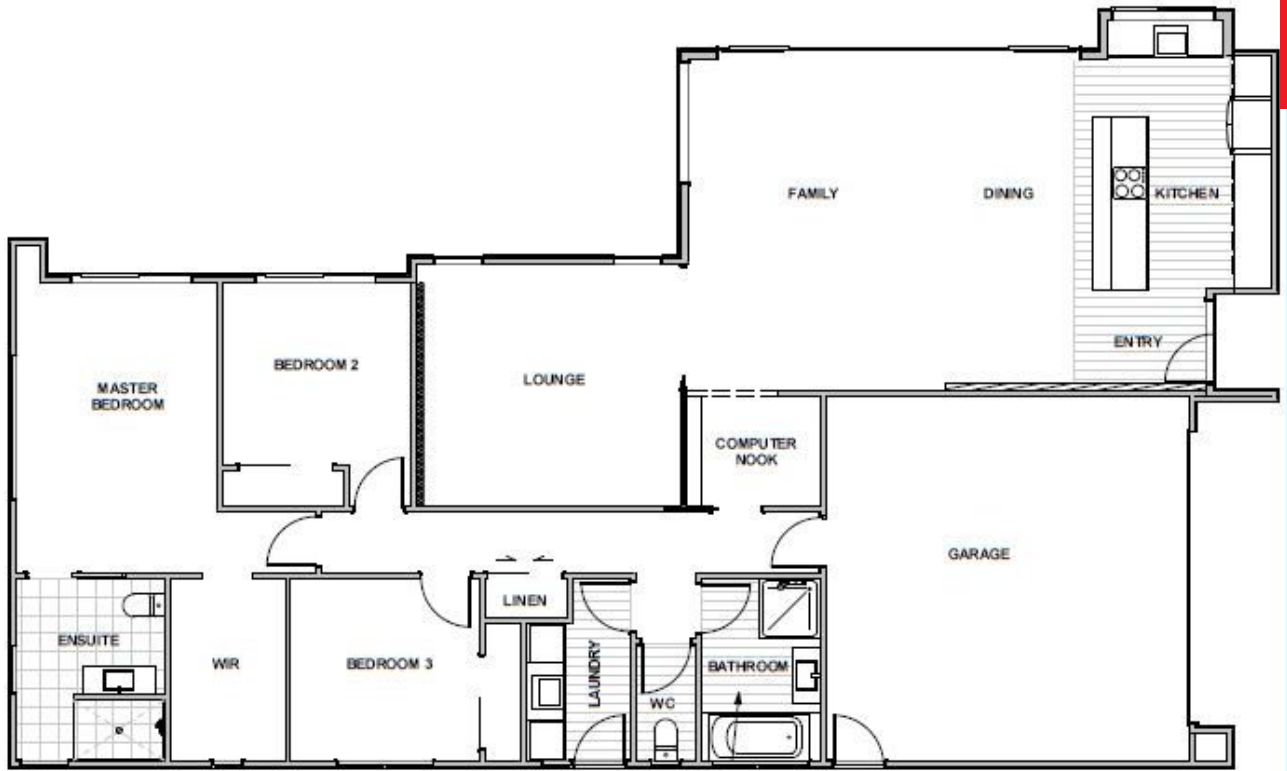
### Dwayne Prendergast

**P** 021 220 0591

**E** Dwayne.Prendergast@jennian.co.nz

# Ravenswood Display Home

198m<sup>2</sup> | 3 bdrm



Living Area

198 m<sup>2</sup>

The images may show features which may not be included in the standard plan or price. Your local Jennian New Home Consultant will confirm standard features and discuss your ideas. All plans remain the copyright of Jennian Homes.