








Display Home - 20 Montiicola Drive, Palm Springs, Papamoa

 4	 2	 2	 3	 2
---	---	---	---	---

This home offers an ideal sanctuary for you and your loved ones. Based on our Rossini house plan, on the upper floor, there are four sizable bedrooms that accompany the roomy master suite, which includes a private balcony. You can savor life in your elegant suburban escape with ample space to relax. You can easily transfer your groceries to the kitchen through the dual access scullery and relish in the open-plan living and alfresco entertaining areas, which are situated away from the street.

Tauranga & Western BOP

180 Fifteenth Avenue, Tauranga

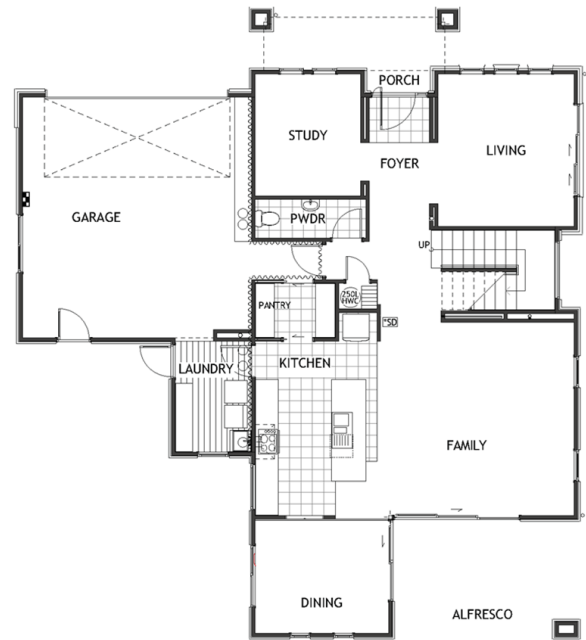
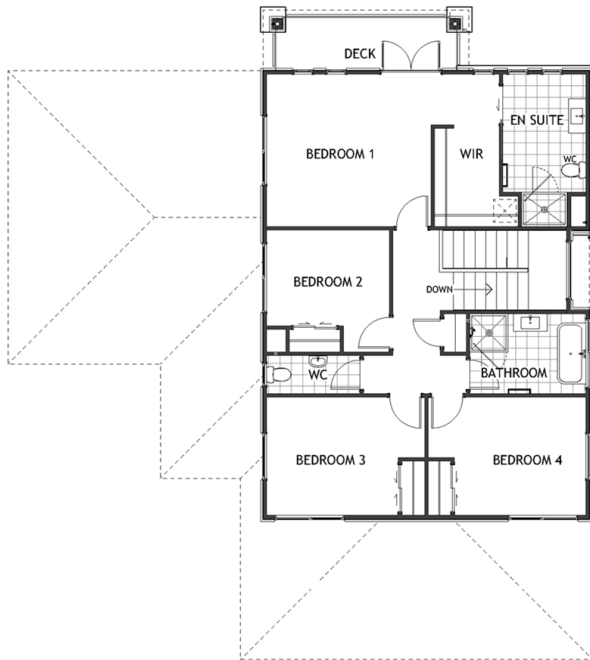
P 07 925 9800

E tauranga@jennian.co.nz

jennian.co.nz

Display Home - 20 Monticola Drive, Palm Springs, Papamoa

269.76m² | 4 bdrm



Living Area	228.5 m ²
Garage Area	41.26 m ²
Total Floor Area	269.76 m²
Home Width	14.65 m
Home Length	16.43 m

The images may show features which may not be included in the standard plan or price. Your local Jennian New Home Consultant will confirm standard features and discuss your ideas. All plans remain the copyright of Jennian Homes.