

# House and Land Package

**FROM \$639,000**



## Lot 58, Churcher Street, Feilding, NZ | House and Land |

3	1	0	1	1
---	---	---	---	---

Discover easy, contemporary living with The Seascape at Lot 58, Churcher Street, Feilding, a stylish house and land package designed for comfort, functionality, and low-maintenance living.

This thoughtfully designed new build home offers a smart layout that maximises space, natural light, and seamless indoor-outdoor flow. Featuring three well-proportioned bedrooms, including a flexible third bedroom ideal as a home office or study, it's perfectly suited to families, first home buyers, professionals, or downsizers looking for a modern lifestyle.

### Manawatu and Whanganui

275 Broadway Avenue, Palmerston North 4414

**P** 06 355 3325

**E** [manawatu@jennian.co.nz](mailto:manawatu@jennian.co.nz)

[jennian.co.nz](http://jennian.co.nz)

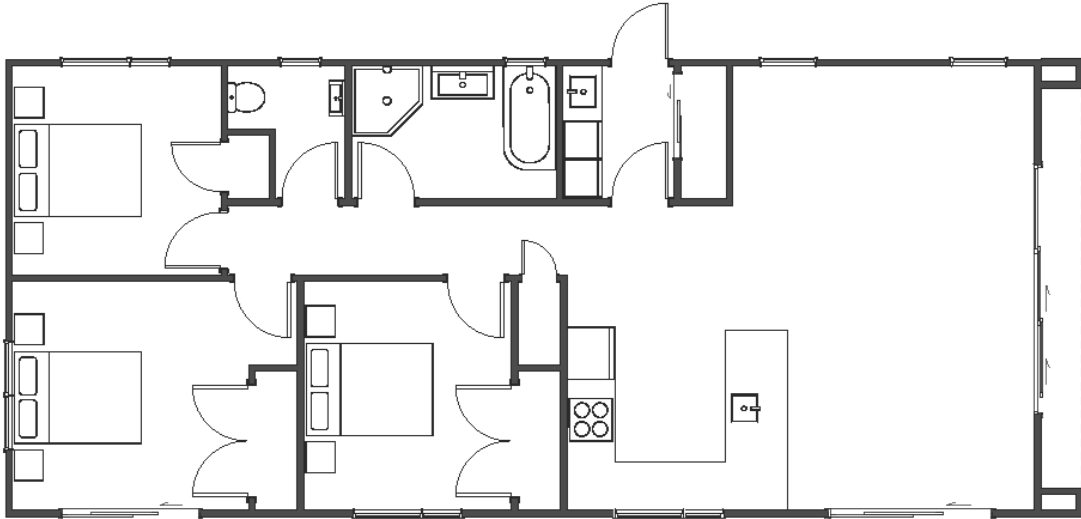
### Erin Maiava-Balle

**P** 0272470775

**E** [erin.maiava-balle@jennian.co.nz](mailto:erin.maiava-balle@jennian.co.nz)

# Lot 58, Churcher Street, Feilding, NZ | House and Land |

100.00m<sup>2</sup> | 3 bdrm



Living Area	100 m <sup>2</sup>
Home Width	6.6 m
Home Length	15.5 m
Land Area	530 m <sup>2</sup>

The images may show features which may not be included in the standard plan or price. Your local Jennian New Home Consultant will confirm standard features and discuss your ideas. All plans remain the copyright of Jennian Homes.