






# House and Land Package

**FROM \$1,085,400**

**Jennian**  
HOMES



## Build big and better in Clearwater Te Kamo

 4	 2	 2	 2	 2
---	---	---	---	---

Lot 3 in Stage 1 of Clearwater, located only 5 mins from Central Te Kamo, this 1901m<sup>2</sup> Lot gives you all the room to spread out, plan the gardens and maybe even plan that investment build out the back! (yes that's an option here!)

Pair this with the Jennian Homes Kakapo, this standard 4-bedroom plan has proven time and again to be a successful family plan, with room for everyone!

2 dedicated living areas, outdoor flow and a double garage, there's not much else you need!

This package includes pricing for site works, drainage, council costs, concrete drives and patios, heating and our Ready Range specification.

Call our team for more info.

Note: images may differ slightly from offering.

### Northland

Studio J and Office - 1 Selwyn Avenue, Whangarei 0110

**P** 09 459 5408

**E** [northland@jennian.co.nz](mailto:northland@jennian.co.nz)

[jennian.co.nz](http://jennian.co.nz)

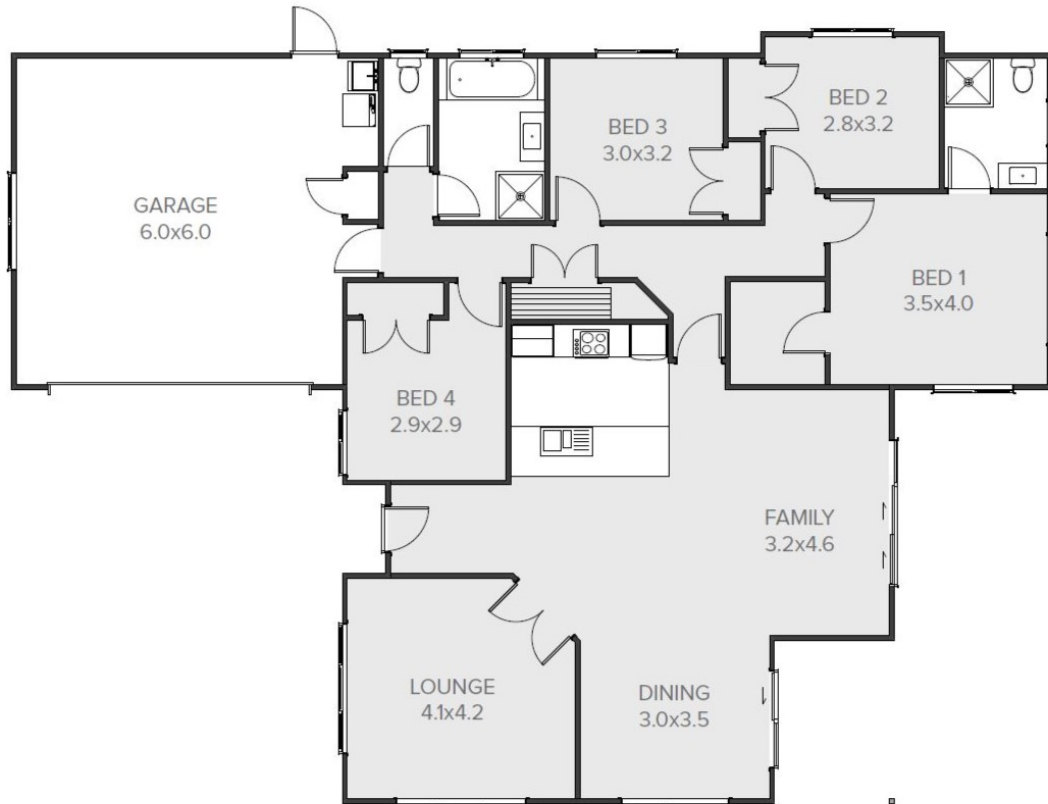
### Rena Belcher

**P** 027 511 4021

**E** [rena.belcher@jennian.co.nz](mailto:rena.belcher@jennian.co.nz)

# Build big and better in Clearwater Te Kamo

204.00m<sup>2</sup> | 4 bdr



Living Area	204 m <sup>2</sup>
Home Width	14.42 m
Home Length	19.39 m
Land Area	1901 m <sup>2</sup>

The images may show features which may not be included in the standard plan or price. Your local Jennian New Home Consultant will confirm standard features and discuss your ideas. All plans remain the copyright of Jennian Homes.