






# House and Land Package

**FROM \$977,900**

**Jennian**  
HOMES



## Live the Good life in Clearwater Te Kamo

 3	 2	 2	 2	 1
---	---	---	---	---

Create a home that you want to come home to, on Lot 3 at Clearwater Te Kamo, this 1901m<sup>2</sup> section overlooks the stunning Native trees on Parakiore Mountain, with views towards Central Whangarei, this section give you the space to grow!

Pair this with the Jennian Homes James Plan, 3 bedrooms and open plan living, perfect for outdoor family living with the flow to outdoor areas. Including allowances for site works, Concrete Drives and Paths, Council costs & our full ready range specification.

Call our team for more information.

### Northland

Studio J and Office - 1 Selwyn Avenue, Whangarei 0110

**P** 09 459 5408

**E** northland@jennian.co.nz

**jennian.co.nz**

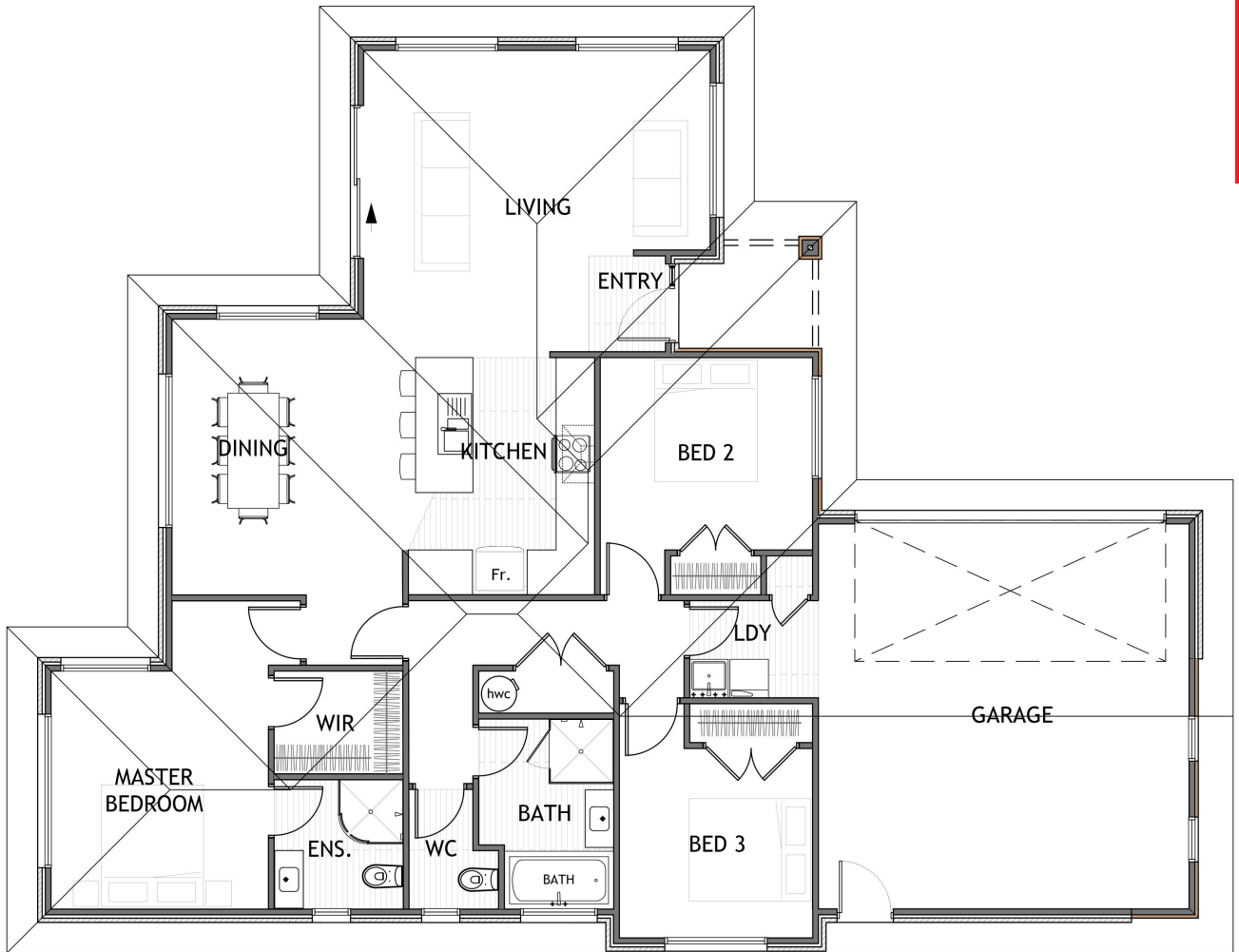
### Rena Belcher

**P** 027 511 4021

**E** rena.belcher@jennian.co.nz

# Live the Good life in Clearwater Te Kamo

171.60m<sup>2</sup> | 3 bdrm



Living Area	171.6 m <sup>2</sup>
Home Width	14 m
Home Length	18.4 m
Land Area	1901 m <sup>2</sup>

The images may show features which may not be included in the standard plan or price. Your local Jennian New Home Consultant will confirm standard features and discuss your ideas. All plans remain the copyright of Jennian Homes.