








Display Home - 54 Summersfield Boulevard, Richmond

 3	 2	 2	 2	 1
---	---	---	---	---

Purposefully designed to inspire, this beautifully crafted 170.4m² home showcases refined interiors, seamless open-plan living, and thoughtful design details at every turn.

With three generous bedrooms and a double car garage, the layout balances everyday functionality with modern style—making it ideal whether you're building in a residential subdivision or a rural lifestyle setting. From the light-filled living spaces to the carefully considered finishes, every element has been selected to spark ideas for your own home journey.

Nelson Bays

8a Champion Road Richmond (Livi brook Complex)

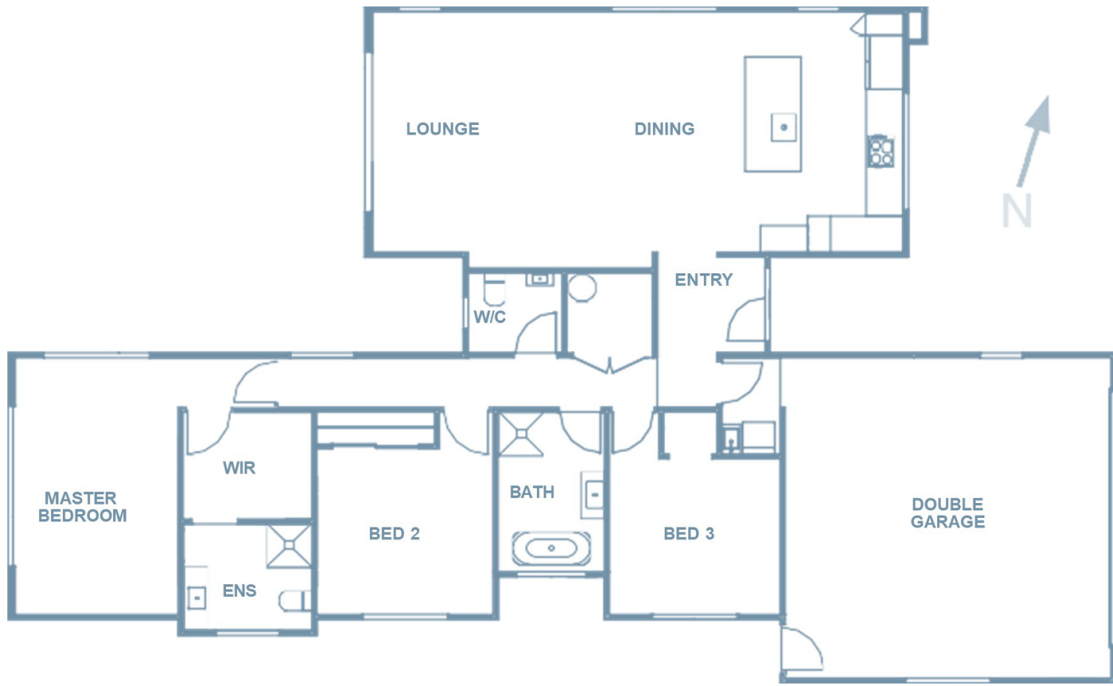
P 03 544 4390

E nelson@jennian.co.nz

jennian.co.nz

Display Home - 54 Summersfield Boulevard, Richmond

170.40m² | 3 bdr



Living Area

170.4 m²

The images may show features which may not be included in the standard plan or price. Your local Jennian New Home Consultant will confirm standard features and discuss your ideas. All plans remain the copyright of Jennian Homes.