






House and Land Package

FROM \$869,000



17 Alan Miers Way, Fitzherbet, Palmerston North, NZ | House and Land

 3	 2	 2	 2	 1
---------------------------------------------------------------------------------------	---------------------------------------------------------------------------------------	---------------------------------------------------------------------------------------	---------------------------------------------------------------------------------------	---------------------------------------------------------------------------------------

Discover modern living in a premium location with this quality house and land package at 17 Alan Miers Way, Fitzherbet, Palmerston North, positioned in the highly sought-after Summerhill neighbourhood. Known for its elevated outlook, quality homes and close proximity to Massey University, Summerhill remains one of the most desirable places to build a new home in Palmerston North.

Manawatu and Whanganui

275 Broadway Avenue, Palmerston North 4414

P 06 355 3325

E manawatu@jennian.co.nz

jennian.co.nz

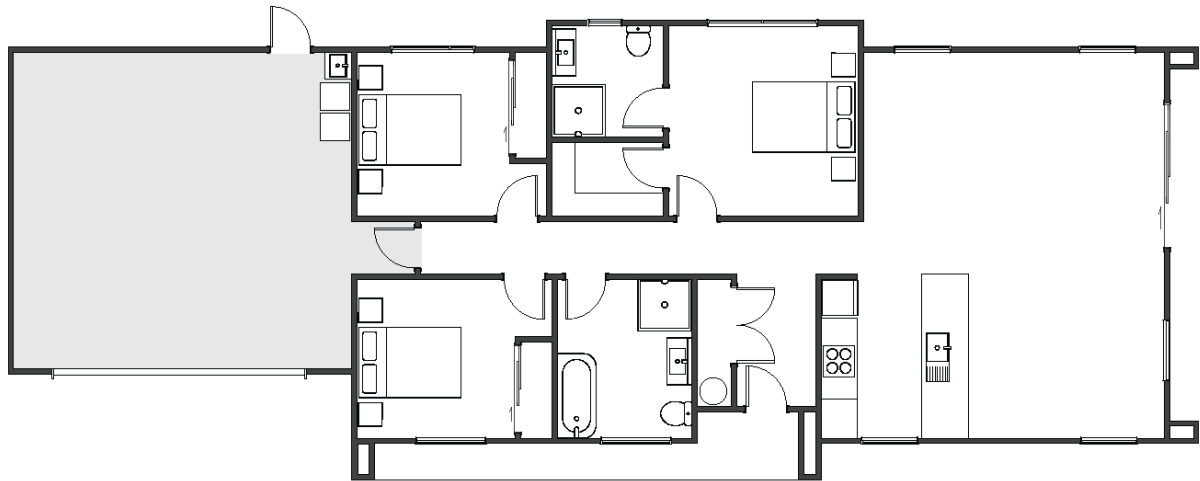
Erin Maiava-Balle

P 0272470775

E erin.maiava-balle@jennian.co.nz

17 Alan Miers Way, Fitzherbet, Palmerston North, NZ | House and Land

159.00m² | 3 bdrm



Living Area	123 m ²
Garage Area	36 m ²
Total Floor Area	159 m²
Home Width	8.7 m
Home Length	22.55 m
Land Area	595 m ²

The images may show features which may not be included in the standard plan or price. Your local Jennian New Home Consultant will confirm standard features and discuss your ideas. All plans remain the copyright of Jennian Homes.