

# House and Land Package

**FROM \$859,000**

**Jennian**  
HOMES



## **11 Alan Miers Way, Fitzherbet, Palmerston North, NZ | House and Land**

 3	 2	 1	 2	 1
---	---	---	---	---

Secure your place in one of Palmerston North's most desirable neighbourhoods with this premium house and land package in Summerhill, located at 11 Alan Miers Way, Fitzherbet. Renowned for its elevated setting, quality homes and strong community appeal, Summerhill Palmerston North continues to attract families, professionals and investors seeking space, views and everyday convenience close to the city.

### **Manawatu and Whanganui**

275 Broadway Avenue, Palmerston North 4414

**P** 06 355 3325

**E** [manawatu@jennian.co.nz](mailto:manawatu@jennian.co.nz)

[jennian.co.nz](http://jennian.co.nz)

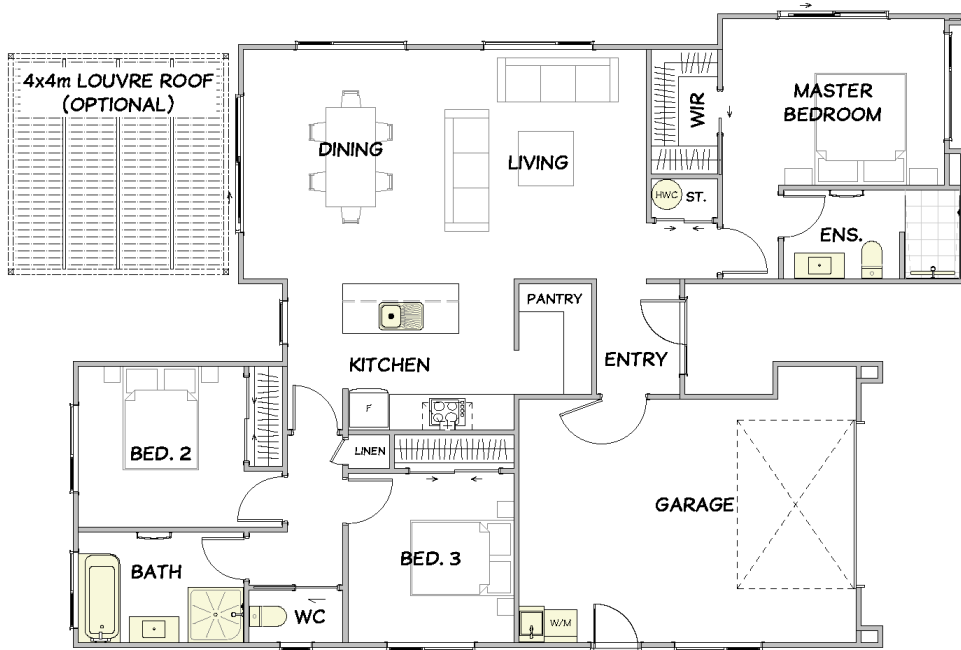
### **Haydon Christian**

**P** 027 300 0390

**E** [haydon.christian@jennian.co.nz](mailto:haydon.christian@jennian.co.nz)

# 11 Alan Miers Way, Fitzherbet, Palmerston North, NZ | House and Land

143.00m<sup>2</sup> | 3 bdrm



Living Area 116 m<sup>2</sup>

Garage Area 27 m<sup>2</sup>

**Total Floor Area 143 m<sup>2</sup>**

Home Width 11.5 m

Home Length 16.2 m

Land Area 543 m<sup>2</sup>

The images may show features which may not be included in the standard plan or price. Your local Jennian New Home Consultant will confirm standard features and discuss your ideas. All plans remain the copyright of Jennian Homes.