

House and Land Package

FROM \$859,000

Jennian
HOMES



11 Alan Miers Way, Fitzherbet, Palmerston North, NZ | House and Land

 3	 2	 1	 2	 1
---------------------------------------------------------------------------------------	---------------------------------------------------------------------------------------	---------------------------------------------------------------------------------------	---------------------------------------------------------------------------------------	---------------------------------------------------------------------------------------

Secure your place in one of Palmerston North's most desirable neighbourhoods with this premium house and land package in Summerhill, located at 11 Alan Miers Way, Fitzherbet. Renowned for its elevated setting, quality homes and strong community appeal, Summerhill Palmerston North continues to attract families, professionals and investors seeking space, views and everyday convenience close to the city.

Manawatu and Whanganui

275 Broadway Avenue, Palmerston North 4414

P 06 355 3325

E manawatu@jennian.co.nz

jennian.co.nz

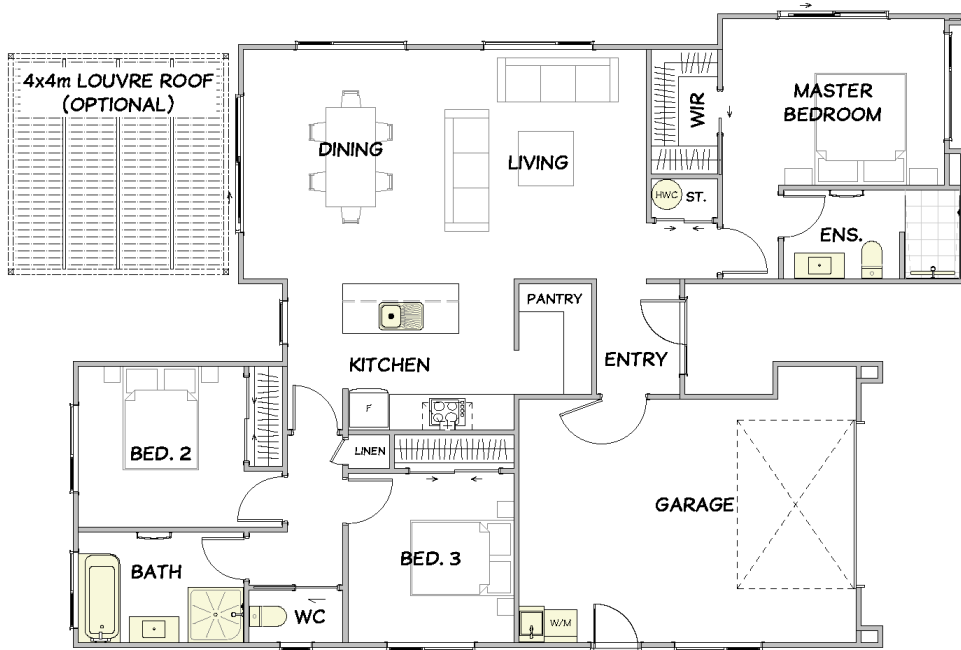
Erin Maiava-Balle

P 0272470775

E erin.maiava-balle@jennian.co.nz

11 Alan Miers Way, Fitzherbet, Palmerston North, NZ | House and Land

143.00m² | 3 bdrm



Living Area 116 m²

Garage Area 27 m²

Total Floor Area 143 m²

Home Width 11.5 m

Home Length 16.2 m

Land Area 543 m²

The images may show features which may not be included in the standard plan or price. Your local Jennian New Home Consultant will confirm standard features and discuss your ideas. All plans remain the copyright of Jennian Homes.