






House Only  
FROM \$535,000

Jennian  
HOMES



## HeiHei

 4	 2	 2	 2	 2
---	---	---	---	---

The Heihei is a thoughtfully designed 176sqm home, offering a well-balanced 4-bedroom layout that combines functionality with modern living. Featuring spacious open-plan living, two separate living areas, a walk-through laundry, and a well-appointed pantry, this design is ideal for growing families or those who love to entertain.

The Heihei delivers exceptional value without compromising on comfort or design.

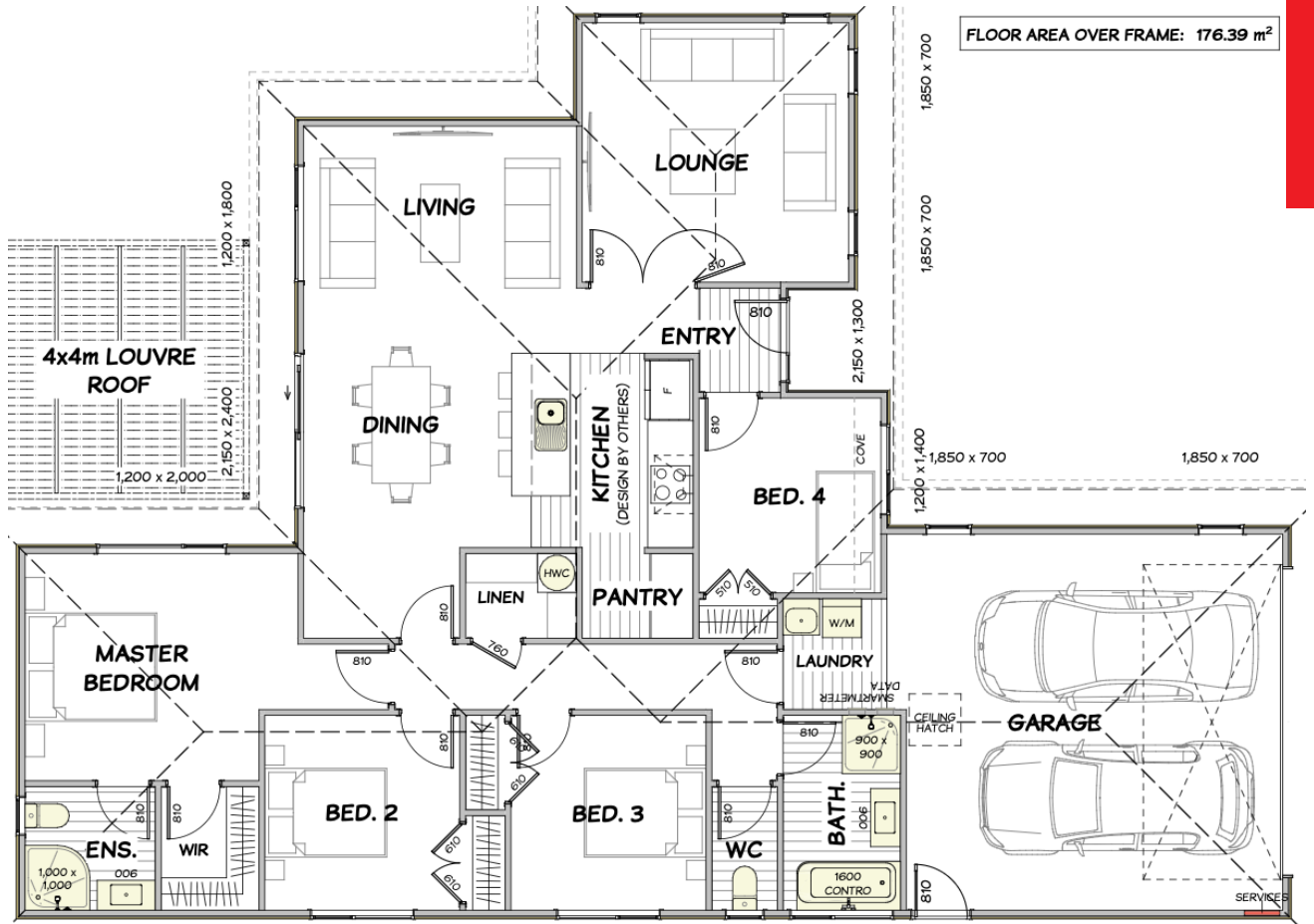
### Waikato

Studio J, 502 Grey Street, Hamilton 3216

P 07 949 7770

E [Waikato@jennian.co.nz](mailto:Waikato@jennian.co.nz)

[jennian.co.nz](http://jennian.co.nz)



Living Area	176 m <sup>2</sup>
Home Width	13.89 m
Home Length	13.69 m

The images may show features which may not be included in the standard plan or price. Your local Jennian New Home Consultant will confirm standard features and discuss your ideas. All plans remain the copyright of Jennian Homes.