

# House and Land Package

## FROM \$985,000





**Jennian**  
HOMES



## 18 Sir Bob Charles Drive, Masterton, NZ | House and Land

Discover a beautifully designed new build home in Masterton, positioned in an emerging, family-friendly neighbourhood. Located on a generous 767m<sup>2</sup> section (Lot 167), this premium house and land package delivers modern comfort, quality craftsmanship, and low-maintenance living, perfect for families, downsizers and buyers seeking a turnkey home in the Wairarapa.

This stylish 170.84m<sup>2</sup> home offers 3 bedrooms, 2 bathrooms, and a separate toilet, all centered around a spacious open-plan kitchen, dining and family area. The designer kitchen features a concealed scullery, premium finishes, and effortless indoor-outdoor flow to a covered alfresco area, ideal for entertaining year-round.

 3	 2	 2	 2	 1
---	---	---	---	---

### Wairarapa

200 Chapel Street, Masterton 5810

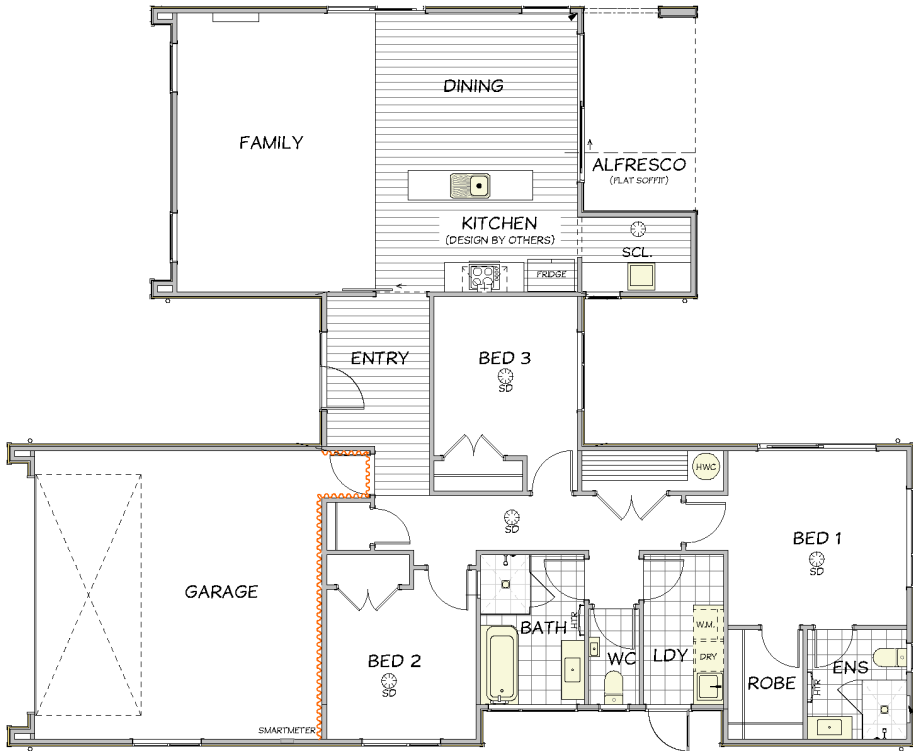
**P** 06 370 0777

**E** [wairarapa@jennian.co.nz](mailto:wairarapa@jennian.co.nz)

**jennian.co.nz**

18 Sir Bob Charles Drive, Masterton, NZ | House and Land

170.84m<sup>2</sup> | 3 bdrm



Living Area	170.84 m <sup>2</sup>
Home Width	14.82 m
Home Length	18.17 m
Land Area	767 m <sup>2</sup>

The images may show features which may not be included in the standard plan or price. Your local Jennian New Home Consultant will confirm standard features and discuss your ideas. All plans remain the copyright of Jennian Homes.