






House and Land Package

FROM \$945,000



Lot 806 Alan Miers Way, Fitzherbert, Palmerston North, NZ | House and Land

 3	 2	 2	 2	 1
---	---	---	---	---

Experience warm, modern living in this beautifully designed three-bedroom Pavilion-style home and land package, perfectly positioned in one of Palmerston North's most desirable suburbs, Fitzherbert. Thoughtfully planned for comfort, sunlight, and effortless everyday living, this new build offers the ideal blend of style, functionality, and location.

Located on Alan Miers Way, just off Johnstone Drive, this home sits among quality properties, highly regarded schooling options, and a welcoming, community-minded neighbourhood. It's the perfect location for families, professionals, or anyone seeking a modern new build in Palmerston North with excellent amenities close by.

Manawatu and Whanganui

275 Broadway Avenue, Palmerston North 4414

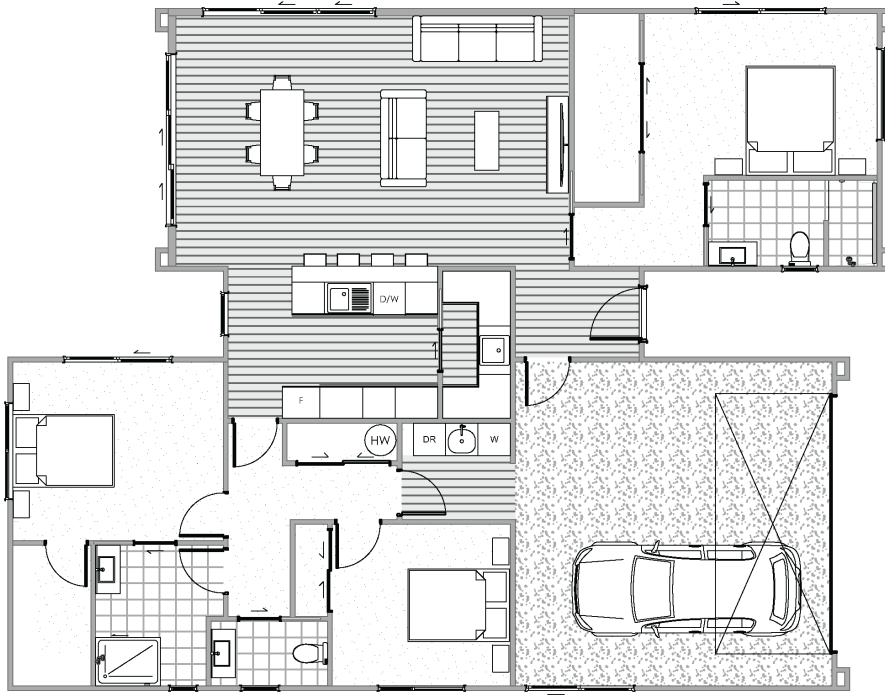
P 06 355 3325

E manawatu@jennian.co.nz

jennian.co.nz

Lot 806 Alan Miers Way, Fitzherbert, Palmerston North, NZ | House and Land

173.00m² | 3 bdr



Living Area	138 m ²
Garage Area	35 m ²
Total Floor Area	173 m²
Home Width	12.7 m
Home Length	16.45 m
Land Area	543 m ²

The images may show features which may not be included in the standard plan or price. Your local Jennian New Home Consultant will confirm standard features and discuss your ideas. All plans remain the copyright of Jennian Homes.