

# House and Land Package

## FROM \$778,235

**Jennian**  
HOMES








## 7 Ross Taylor Lane, Westbush, Wairarapa, NZ | House and Land

Clearview Living – Secure Your New Home Today with Just 5% Deposit

Looking for a stress-free way to own your dream home? The Clearview is a stylish 151m<sup>2</sup> turnkey home designed for effortless family living, now available in the highly sought-after Westbush subdivision at 7 Ross Taylor Lane.

With Jennian Homes, owning your new home has never been easier: Secure it now with only a 5% deposit, pay nothing more until your home is complete.

 3	 2	 2	 2	 1
---	---	---	---	---

### Wairarapa

200 Chapel Street, Masterton 5810

**P** 06 370 0777

**E** [wairarapa@jennian.co.nz](mailto:wairarapa@jennian.co.nz)

[jennian.co.nz](http://jennian.co.nz)

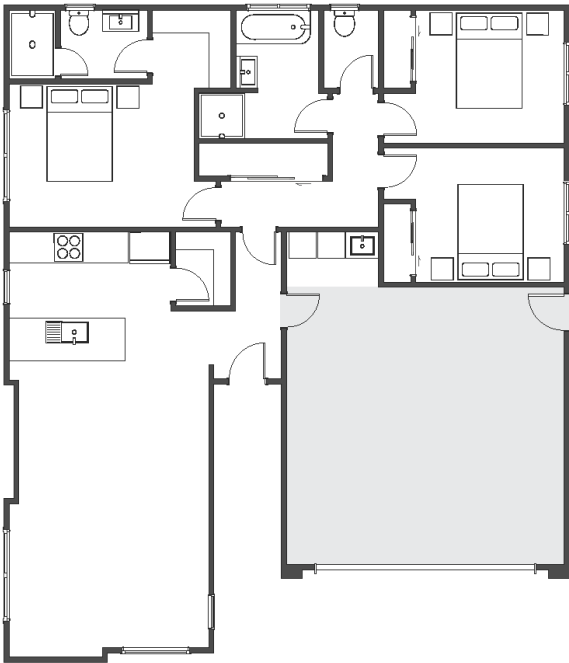
### Kerrie Maitland

**P** 0212428802

**E** [Kerrie.Maitland@jennian.co.nz](mailto:Kerrie.Maitland@jennian.co.nz)

7 Ross Taylor Lane, Westbush, Wairarapa, NZ | House and Land

151.00m<sup>2</sup> | 3 bdrm



Living Area	115 m <sup>2</sup>
Garage Area	36 m <sup>2</sup>
Total Floor Area	151 m <sup>2</sup>
Home Width	12.2 m
Home Length	14.2 m
Land Area	435 m <sup>2</sup>

The images may show features which may not be included in the standard plan or price. Your local Jennian New Home Consultant will confirm standard features and discuss your ideas. All plans remain the copyright of Jennian Homes.