

House and Land Package

FROM \$1,200,000






Jennian
HOMES



140 Te Tutu Street, Whangamata, Thames- Coromandel, NZ | House and Land

Find Your Place in Whangamata

Imagine waking up to the sound of waves, sunlight streaming through your windows, and lush green hills framing your view. This elevated 692m² corner site in Whangamata's newest subdivision is your chance to create a home that feels like summer—every day. Pair it with the Jennian Clearview, 3 bedrooms, 1 living area, 2 bathrooms, 2 toilets, and a 2-car garage, this home is designed to accommodate modern living while maintaining a sense of warmth and personal connection.

 3	 2	 2	 2	 1
---	---	---	---	---

Hauraki and Coromandel

614 Port Road, Whangamata 3620

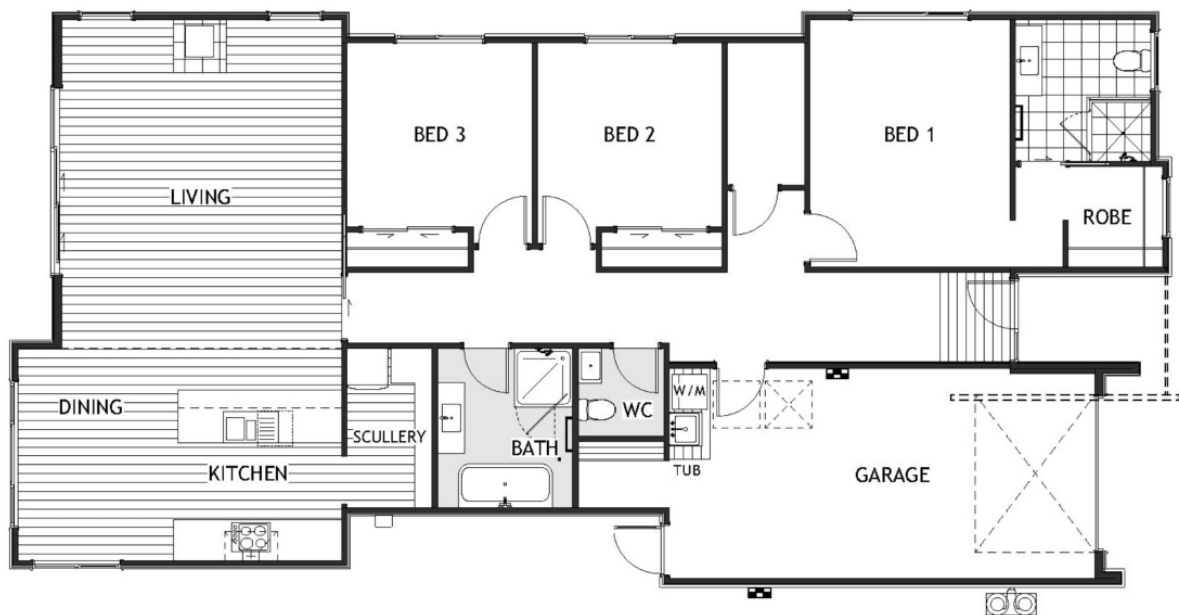
P 07 865 6767

E coromandel@jennian.co.nz

jennian.co.nz

140 Te Tutu Street, Whangamata, Thames-Coromandel, NZ | House and Land

151.00m² | 3 bdrm



Living Area	151 m ²
Home Width	12.2 m
Home Length	14.2 m
Land Area	692 m ²

The images may show features which may not be included in the standard plan or price. Your local Jennian New Home Consultant will confirm standard features and discuss your ideas. All plans remain the copyright of Jennian Homes.