

House and Land Package

Enquiries From \$989,000






Jennian

HOMES



20 Alan Miers Way, Fitzherbert, Palmerston North, NZ | House and Land

Discover the perfect balance of flexibility, comfort, and modern living with this thoughtfully designed four-bedroom house and land package in Summerhill. Set on a generous 607m² section and offering 194m² of contemporary living space, this home is ideal for growing families, multi-generational living, guests, or those seeking a smart home and income opportunity.

 4	 3	 1	 3	 2
---	---	---	---	---

Manawatu and Whanganui

275 Broadway Avenue, Palmerston North 4414

P 06 355 3325

E manawatu@jennian.co.nz

jennian.co.nz

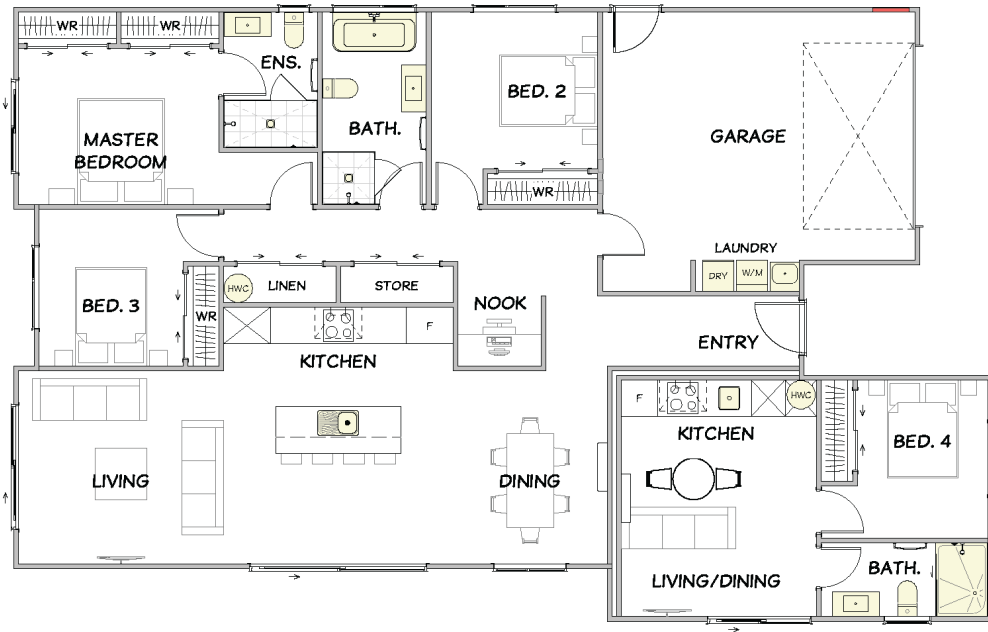
Tessa Satherley

P 027 215 4802

E Tessa.Satherley@Jennian.co.nz

20 Alan Miers Way, Fitzherbert, Palmerston North, NZ | House and Land

194.00m² | 4 bdrm



Living Area	194 m ²
Home Width	11.77 m
Home Length	18.79 m
Land Area	607 m ²

The images may show features which may not be included in the standard plan or price. Your local Jennian New Home Consultant will confirm standard features and discuss your ideas. All plans remain the copyright of Jennian Homes.