

House and Land Package

FROM \$549,000

Jennian
HOMES





Harlow House Plan | House Only

Build Your Dream Home – 159m² of Modern Family Living on Your Land

Already own land and ready to build? This stunning 159m² new build is designed for comfort, space, and effortless living – perfect for families who want room to grow and entertain.

The Harlow House Plan Features: 3 generous bedrooms, 2 stylish bathrooms, open-plan living and double car garage for secure parking and extra storage

 3	 2	 2	 2	 1
---	---	---	---	---

Canterbury

212 Main South Road, Sockburn, Christchurch

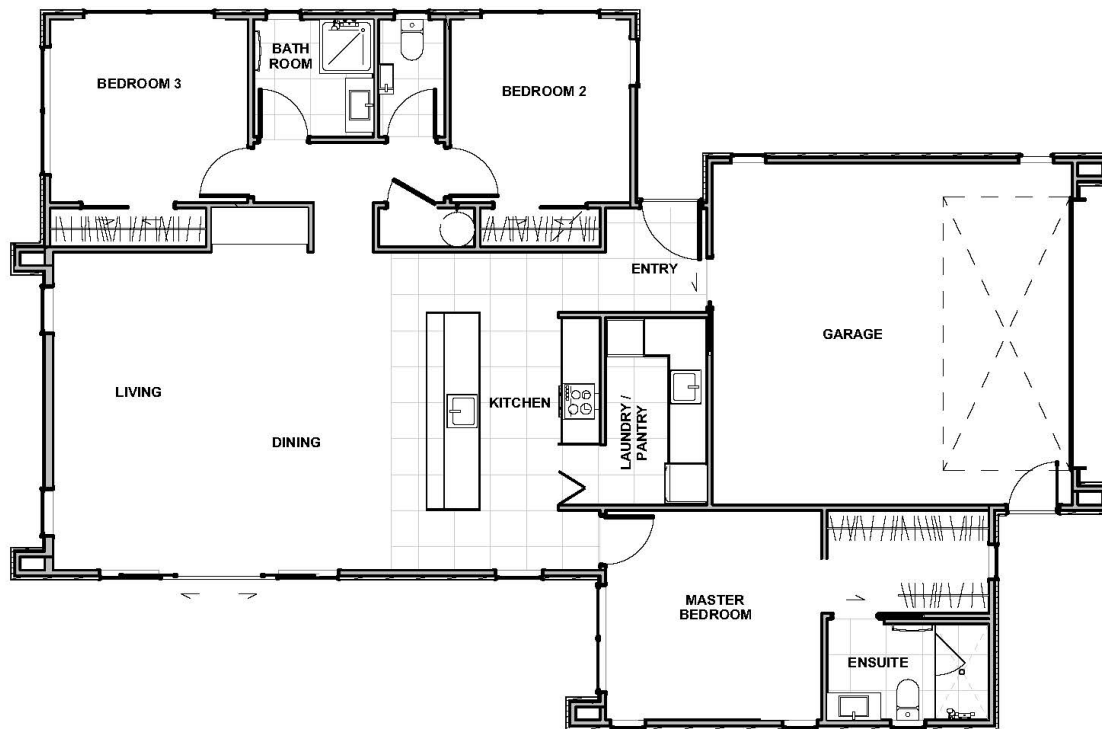
P 03 741 1436

E canterbury@jennian.co.nz

jennian.co.nz

Harlow House Plan | House Only

159.00m² | 3 bdrm



Living Area

159 m²

The images may show features which may not be included in the standard plan or price. Your local Jennian New Home Consultant will confirm standard features and discuss your ideas. All plans remain the copyright of Jennian Homes.