






House and Land Package

FROM \$559,000

Jennian
HOMES



Catalina House Plan | House Only

 3	 2	 2	 2	 2
---	---	---	---	---

Build Your Dream Home – 160m² of Modern Family Living on Your Land

Already own land and ready to build? Designed with your lifestyle in mind, The Catalina embodies the perfect balance of style, practicality, and comfort. It's a testament to the exceptional craftsmanship and ingenuity that Jennian Homes takes pride in.

The Catalina House Plan Features: 3 generous bedrooms, 2 stylish bathrooms, open plan living with a separate media room for added flexibility and a double car garage for secure parking and extra storage.

Canterbury

212 Main South Road, Sockburn, Christchurch

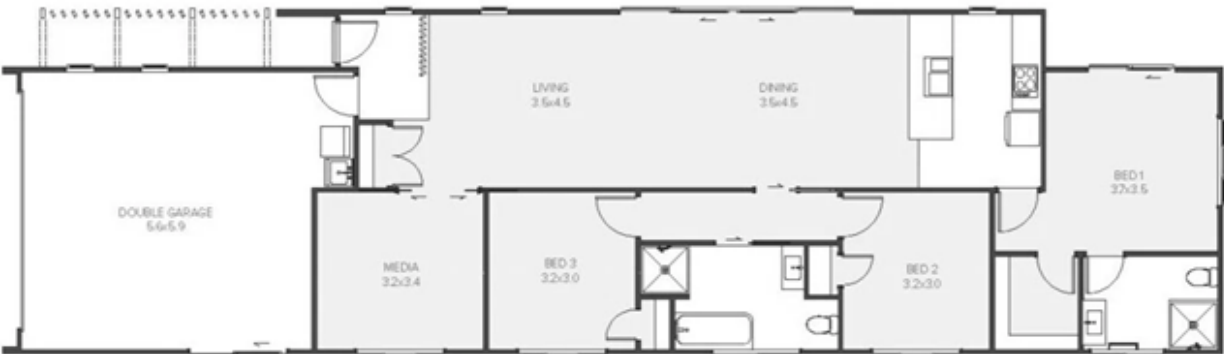
P 03 741 1436

E canterbury@jennian.co.nz

jennian.co.nz

Catalina House Plan | House Only

160.00m² | 3 bdrm



Living Area 160 m²

The images may show features which may not be included in the standard plan or price. Your local Jennian New Home Consultant will confirm standard features and discuss your ideas. All plans remain the copyright of Jennian Homes.