

House and Land Package

FROM \$475,000

Jennian
HOMES



Amy House Plan | House Only

Build Your Dream Home – 170m² of Modern, Family-Friendly Living

Already own land and ready to build? This stunning 170m² new build is designed for comfort, functionality, and style – perfect for growing families or those who love to entertain.






Home Features:

4 spacious bedrooms

2 modern bathrooms

Open-plan living for seamless flow between kitchen, dining, and lounge

Double car garage for secure storage and convenience

 4	 2	 2	 2	 1
---	---	---	---	---

Canterbury

212 Main South Road, Sockburn, Christchurch

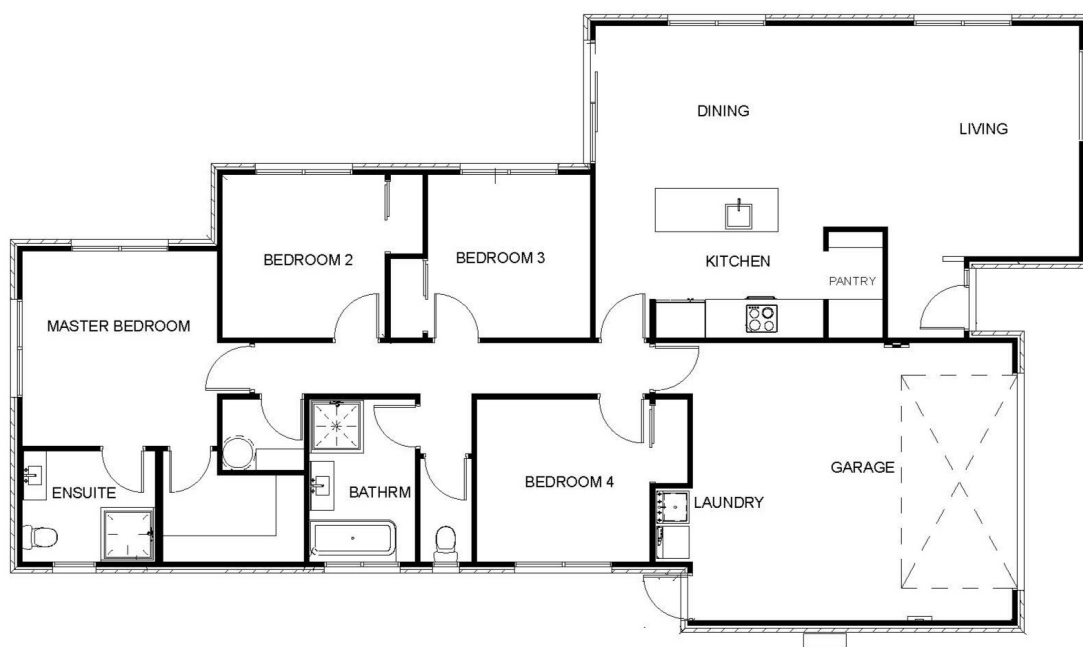
P 03 741 1436

E canterbury@jennian.co.nz

jennian.co.nz

Amy House Plan | House Only

170.00m² | 4 bdrm



Living Area

170 m²

The images may show features which may not be included in the standard plan or price. Your local Jennian New Home Consultant will confirm standard features and discuss your ideas. All plans remain the copyright of Jennian Homes.