






# House and Land Package

FROM \$1,400,000



## 109 Elsinore Close, Whangamata, NZ | House and Land

 3	 2	 2	 3	 1
---	---	---	---	---

Discover the perfect canvas for your dream home in one of New Zealand's most sought-after coastal towns. This exceptional 743m<sup>2</sup> elevated site offers a northerly aspect with stunning upper harbour and bush views, all set against a vibrant urban landscape that provides a picturesque backdrop for your new lifestyle.

At Jennian Homes Hauraki Coromandel, our dedicated design team is here to collaborate with you every step of the way. Whether you're starting from scratch, tailoring one of our inspirational house plans, or bringing your own ideas to the table, we're committed to creating a home that reflects your vision, suits your family, and fits your budget.

### Hauraki and Coromandel

614 Port Road, Whangamata 3620

P 027 788 0014

E [coromandel@jennian.co.nz](mailto:coromandel@jennian.co.nz)

[jennian.co.nz](http://jennian.co.nz)

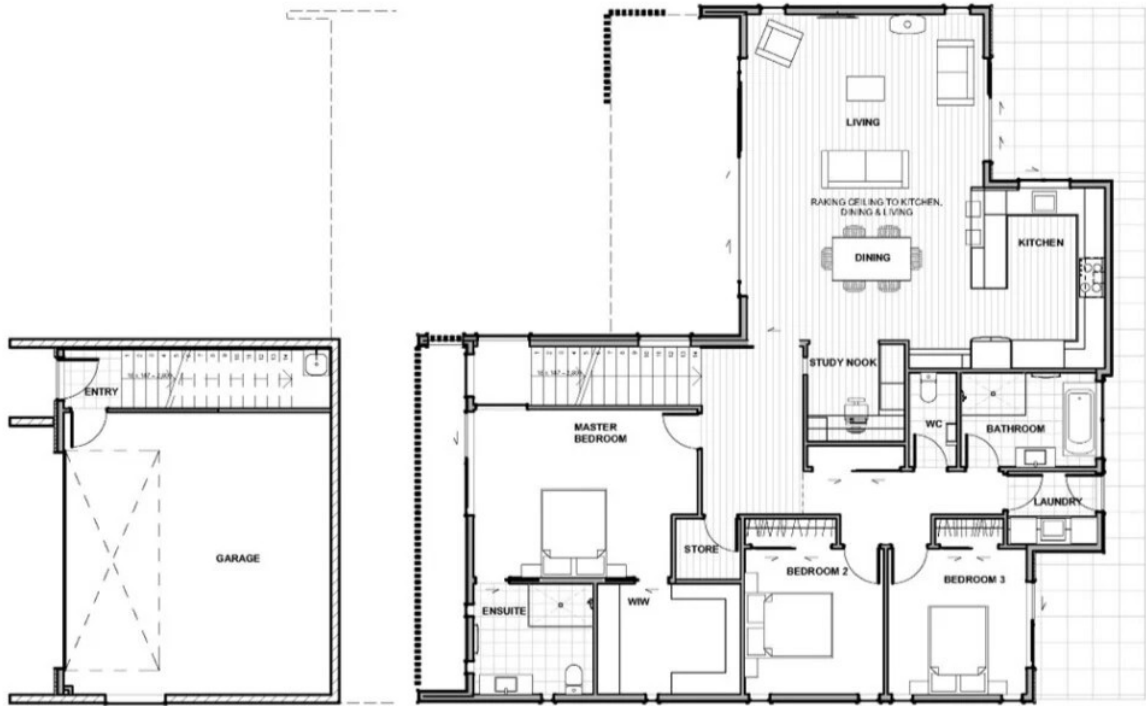
### Shelly Witehira

P 021 113 1467

E [shelly.witehira@jennian.co.nz](mailto:shelly.witehira@jennian.co.nz)

# 109 Elsinore Close, Whangamata, NZ | House and Land

215.00m<sup>2</sup> | 3 bdrm



Living Area 215 m<sup>2</sup>

Land Area 743 m<sup>2</sup>

The images may show features which may not be included in the standard plan or price. Your local Jennian New Home Consultant will confirm standard features and discuss your ideas. All plans remain the copyright of Jennian Homes.