








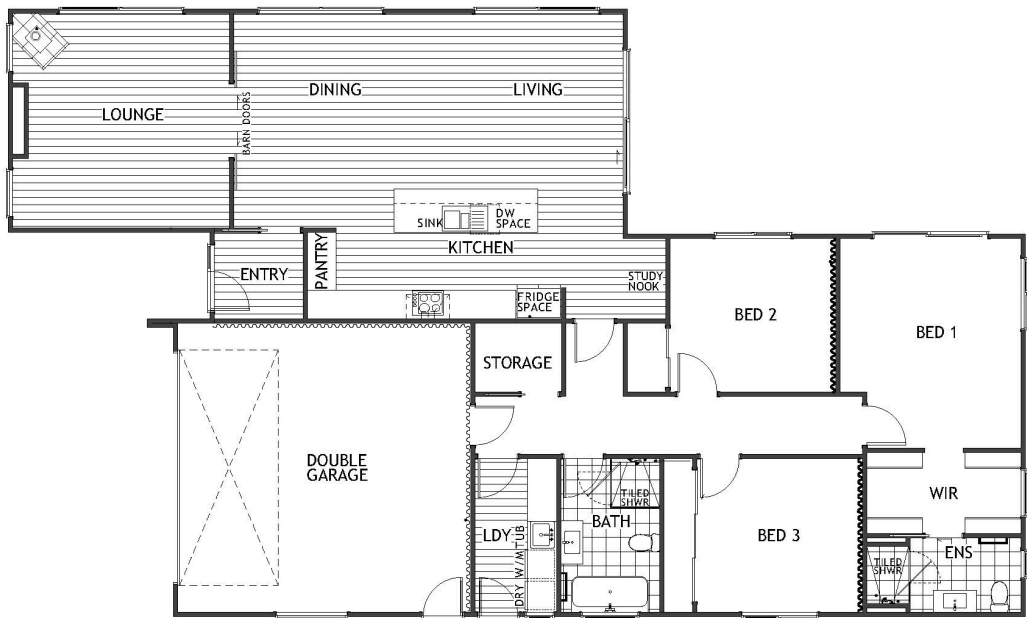
2025 Jennian Homes Otago - House Of The Year Entry

 3	 2	 2	 2	 2
---	---	---	---	---

If a picture is worth 1000 words, then this house needs a book. Framed views of Otago Harbour can be enjoyed from all the living areas and two of the three bedrooms in the elevated north-facing home. Adding to the allure is timber decking spanning from the living space end of the open-plan communal zone to the two sea-facing bedrooms. The owners, with a young family, can enjoy grandstand views with their morning coffee or alfresco meals. It's picture perfect. Expansive glazing ushers in light and warmth along with the vistas. The interior is a study in white with pale timber-look flooring. In the kitchen, texture in the form of white splashback tiles provides interest. Three pendant lights hover above the sleek island.

2025 Jennian Homes Otago - House Of The Year Entry

199.90m² | 3 bdrm



Living Area	162 m ²
Garage Area	37.9 m ²
Total Floor Area	199.9 m ²

The images may show features which may not be included in the standard plan or price. Your local Jennian New Home Consultant will confirm standard features and discuss your ideas. All plans remain the copyright of Jennian Homes.