

# House and Land Package

## FROM \$875,500

**Jennian**  
HOMES








## Lot 16, Geoff Geering Drive, Netherby, Ashburton, Canterbury, NZ | House and Land

Start your home ownership journey the right way in Geoff Geering Drive – a welcoming, established neighbourhood where quality and lifestyle meet. These affordable house and land packages on premium sites offer modern everyday living, energy efficient designs, north facing living for maximum sun plus scenic views and low maintenance / high quality in a popular established subdivision

Build with confidence with Jennian Homes – New Zealand's most awarded building brand. With over 40 years of proven experience and our unmatched completion promise, your new home is in safe hands.

Contact Kate to discuss how Jennian Homes can assist with your new build!

 4	 2	 2	 2	 1
---	---	---	---	---

### Canterbury

212 Main South Road, Sockburn, Christchurch

**P** 03 741 1436

**E** [canterbury@jennian.co.nz](mailto:canterbury@jennian.co.nz)

[jennian.co.nz](http://jennian.co.nz)

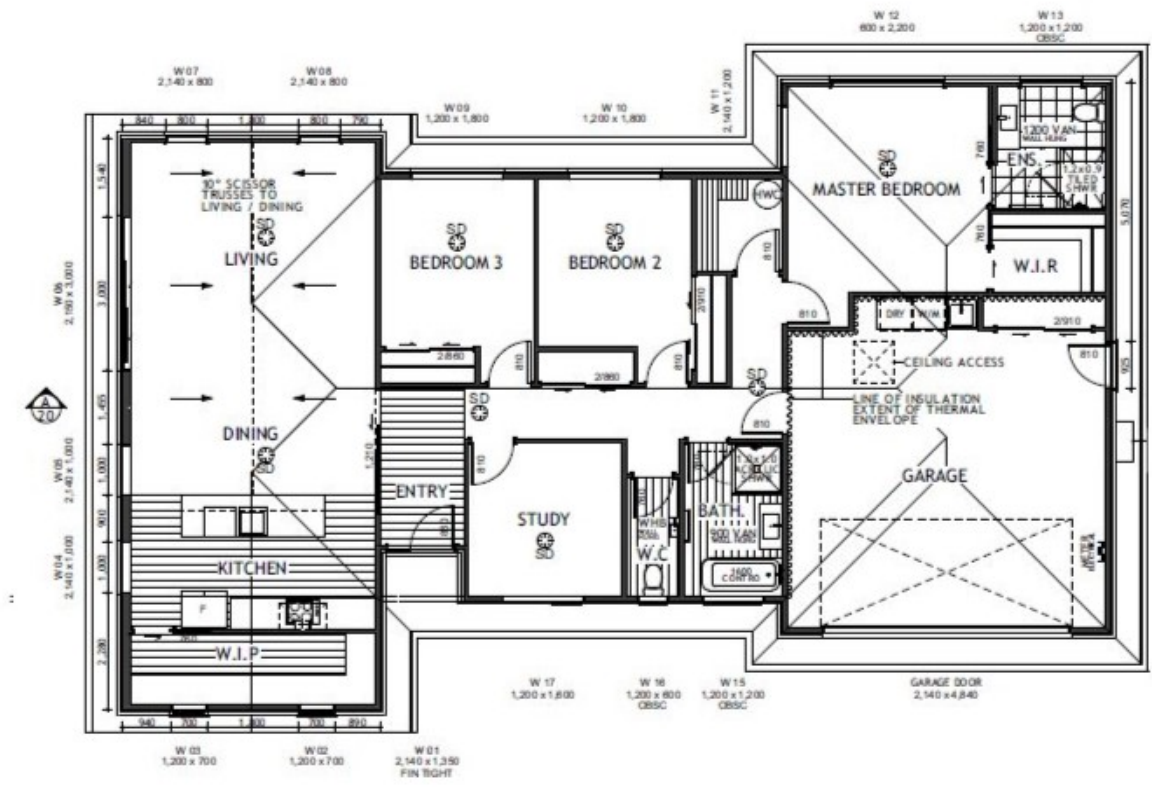
### Kate Moses

**P** 027 454 5636

**E** [kate.moses@jennian.co.nz](mailto:kate.moses@jennian.co.nz)

Lot 16, Geoff Geering Drive, Netherby, Ashburton, Canterbury, N  
House and Land

216.00m<sup>2</sup> | 4 bdrm



Living Area	216 m <sup>2</sup>
Land Area	614 m <sup>2</sup>

The images may show features which may not be included in the standard plan or price. Your local Jennian New Home Consultant will confirm standard features and discuss your ideas. All plans remain the copyright of Jennian Homes.