

House and Land Package

FROM \$799,000






Jennian
HOMES



Lot 19, Geoff Geering Drive, Netherby, Ashburton, Canterbury, NZ | House and Land

Enjoy the perfect balance of comfort, style, and location with this premium house and land package in the heart of Mid Canterbury. Nestled on a sun-drenched, north-facing section in the sought-after Geoff Geering Drive subdivision, this home offers space to grow, room to relax, and a peaceful, family-friendly neighbourhood to call your own.

Whether you're upsizing, downsizing, or building your forever home, this property is designed to suit your lifestyle and budget — without compromise. Built by Jennian Homes, New Zealand's most awarded building brand, you'll enjoy over 40 years of trusted experience, transparent timelines, and a commitment to delivering homes you'll be proud to own.

 3	 2	 2	 2	 1
---	---	---	---	---

Canterbury

212 Main South Road, Sockburn, Christchurch

P 03 741 1436

E canterbury@jennian.co.nz

jennian.co.nz

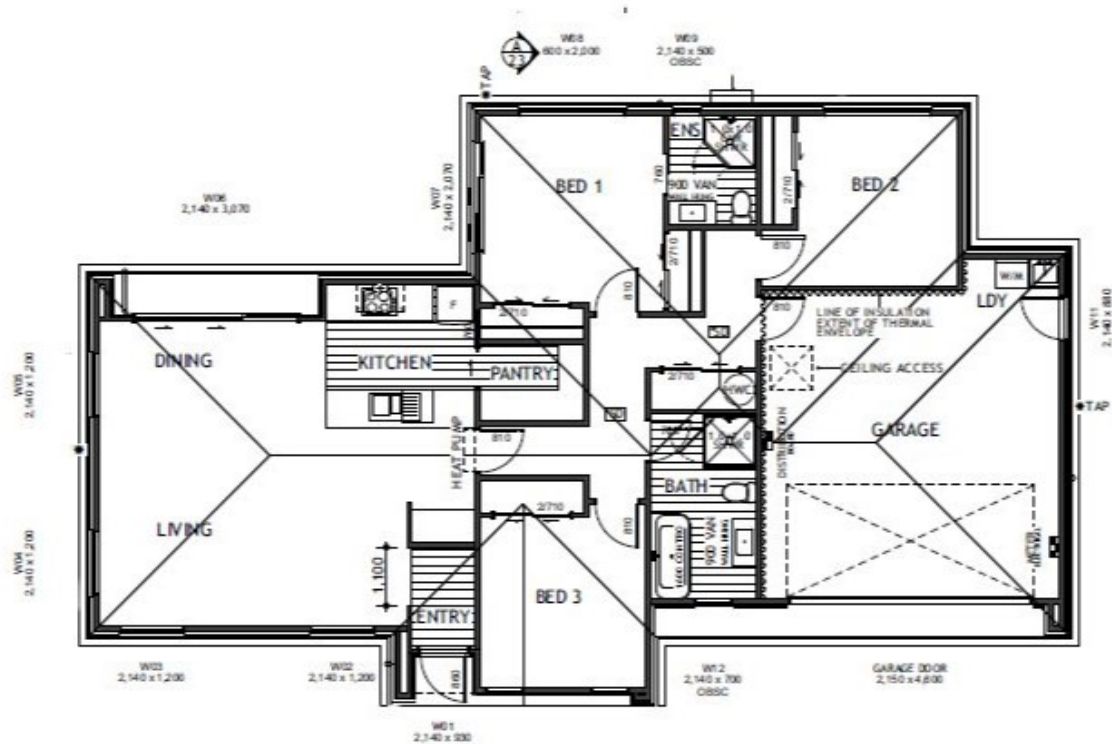
Kate Moses

P 027 454 5636

E kate.moses@jennian.co.nz

Lot 19, Geoff Geering Drive, Netherby, Ashburton, Canterbury, N
House and Land

149.00m² | 3 bdrm



Living Area	149 m ²
Land Area	377 m ²

The images may show features which may not be included in the standard plan or price. Your local Jennian New Home Consultant will confirm standard features and discuss your ideas. All plans remain the copyright of Jennian Homes.