

House and Land Package

FROM \$819,000

Jennian
HOMES








Lot 20, Geoff Geering Drive, Netherby, Ashburton, Canterbury, NZ | House and Land

Stylish, Sunny & Ready for You

Set in the newly developed Geoff Geering Drive subdivision, this beautifully designed home offers the perfect blend of style, space, and sun-soaked living — all in a peaceful, family-friendly neighbourhood. Built to the highest standard by Jennian Homes, you'll enjoy modern comforts, stunning mountain views, and a layout designed for real life.

Thoughtfully designed for busy families, this home features a seamless blend of living and dining spaces, making entertaining easy and everyday life effortless. The smart bedroom zoning ensures privacy and flexibility for your evolving needs.

 3	 2	 2	 2	 1
---	---	---	---	---

Canterbury

212 Main South Road, Sockburn, Christchurch

P 03 741 1436

E canterbury@jennian.co.nz

jennian.co.nz

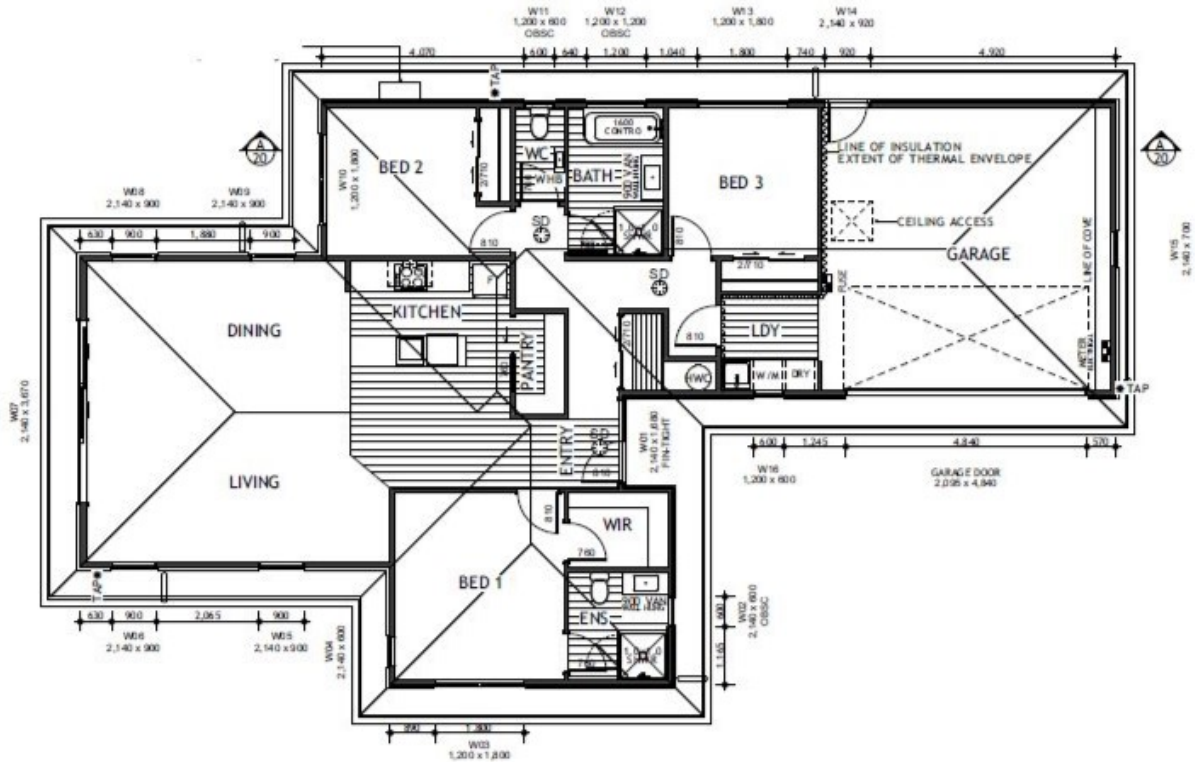
Kate Moses

P 027 454 5636

E kate.moses@jennian.co.nz

Lot 20, Geoff Geering Drive, Netherby, Ashburton, Canterbury, N House and Land

159.00m² | 3 bdrm



Living Area 159 m²

Land Area 458 m²

The images may show features which may not be included in the standard plan or price. Your local Jennian New Home Consultant will confirm standard features and discuss your ideas. All plans remain the copyright of Jennian Homes.