






# House and Land Package

## FROM \$883,000

**Jennian**  
HOMES



## Lot 22, Geoff Geering Drive, Netherby, Ashburton, Canterbury, NZ | House and Land

 4	 2	 2	 2	 2
---	---	---	---	---

### Wake Up to Mountain Views and a Life You'll Love

Imagine starting your day with stunning mountain views, morning sun pouring into your living room, and all the space your family needs to grow, relax, and thrive. This exclusive house and land package in Ashburton offers more than just a place to live — it's a lifestyle upgrade.

Crafted by Jennian Homes, New Zealand's most awarded builder with over 40 years of experience, this home is designed to make the building process smooth, transparent, and enjoyable — so you can focus on what matters most.

Contact Kate today to explore how Jennian Homes can help you step into your dream home.

### Canterbury

212 Main South Road, Sockburn, Christchurch

P 03 741 1436

E [canterbury@jennian.co.nz](mailto:canterbury@jennian.co.nz)

[jennian.co.nz](http://jennian.co.nz)

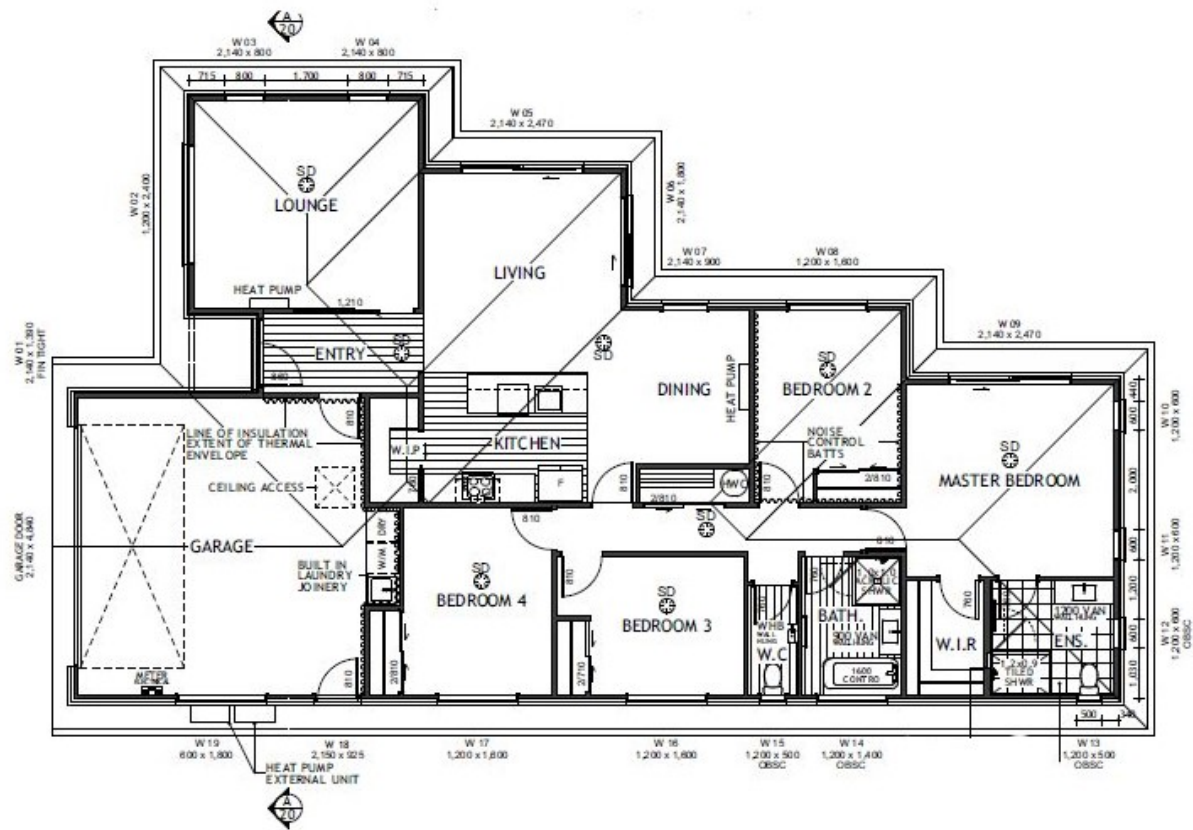
### Kate Moses

P 027 454 5636

E [kate.moses@jennian.co.nz](mailto:kate.moses@jennian.co.nz)

# Lot 22, Geoff Geering Drive, Netherby, Ashburton, Canterbury, NZ House and Land

194.00m<sup>2</sup> | 4 bdrm



Living Area 194 m<sup>2</sup>

Land Area 556 m<sup>2</sup>

The images may show features which may not be included in the standard plan or price. Your local Jennian New Home Consultant will confirm standard features and discuss your ideas. All plans remain the copyright of Jennian Homes.