

House and Land Package

FROM \$879,500

Jennian
HOMES








Lot 23, Geoff Geering Drive, Netherby, Ashburton, Canterbury, NZ | House and Land

Your First Home, Made Easy

Building your first home is a big milestone — and this exclusive house and land package in Ashburton's Geoff Geering Drive subdivision is designed to make the journey smooth, stress-free, and absolutely worth it. Set in a newly developed, family-friendly neighbourhood, this brand-new build offers everything you need to start strong — with quality, comfort, and peace of mind built in.

Say goodbye to landlords and renovation headaches — and hello to a warm, secure, low-maintenance home that's ready for your next chapter.

 4	 2	 2	 2	 2
---	---	---	---	---

Canterbury

212 Main South Road, Sockburn, Christchurch

P 03 741 1436

E canterbury@jennian.co.nz

jennian.co.nz

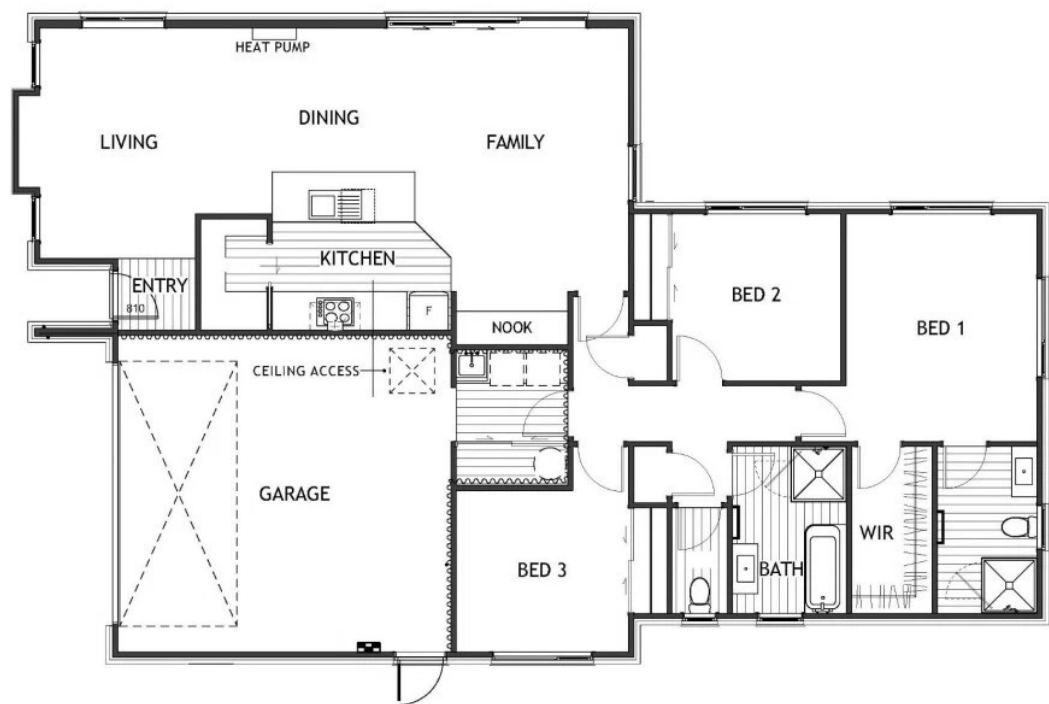
Kate Moses

P 027 454 5636

E kate.moses@jennian.co.nz

Lot 23, Geoff Geering Drive, Netherby, Ashburton, Canterbury, N
 House and Land

213.00m² | 4 bdrm



Living Area	213 m ²
Land Area	556 m ²

The images may show features which may not be included in the standard plan or price. Your local Jennian New Home Consultant will confirm standard features and discuss your ideas. All plans remain the copyright of Jennian Homes.