

House and Land Package

FROM \$877,500

Jennian
HOMES



Lot 24, Geoff Geering Drive, Netherby, Ashburton, Canterbury, NZ | House and Land

Discover the Perfect Place to Call Home!

Welcome to a home where your family can grow, thrive, and create cherished memories for years to come. This exclusive house and land package on Geoff Geering Drive offers the perfect blend of modern comfort, thoughtful design, and a location that truly supports family living.

Why You'll Love It:

North-facing section – enjoy natural warmth and sunshine all year round

Peaceful, family-friendly neighbourhood – safe, quiet streets ideal for kids






Walkable lifestyle – close to local schools, parks, sports fields, and shops

Built by Jennian Homes – one of New Zealand's most trusted and experienced builders

Kate Moses

P 027 454 5636

E kate.moses@jennian.co.nz

 4	 2	 2	 2	 2
---	---	---	---	---

Canterbury

212 Main South Road, Sockburn, Christchurch

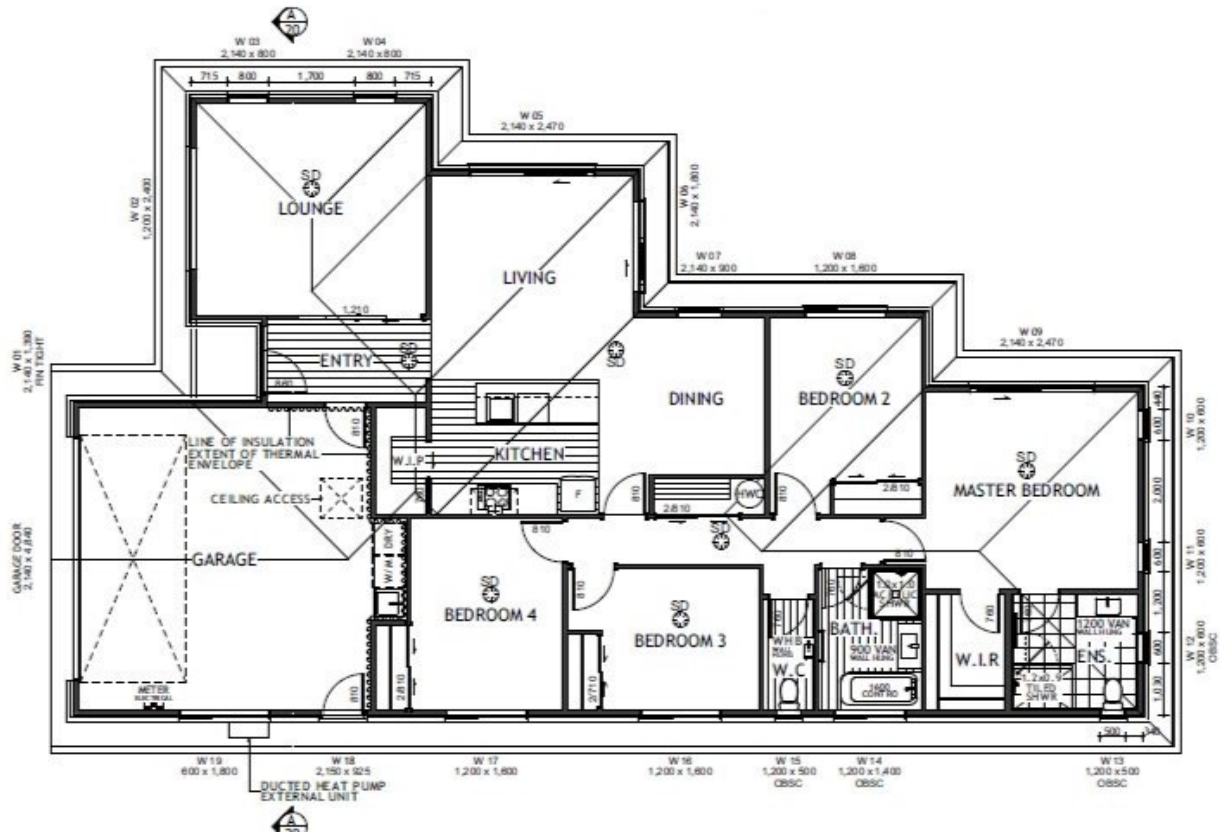
P 03 741 1436

E canterbury@jennian.co.nz

jennian.co.nz

Lot 24, Geoff Geering Drive, Netherby, Ashburton, Canterbury, N House and Land

187.00m² | 4 bdrm



Living Area	187 m ²
Land Area	556 m ²

The images may show features which may not be included in the standard plan or price. Your local Jennian New Home Consultant will confirm standard features and discuss your ideas. All plans remain the copyright of Jennian Homes.