



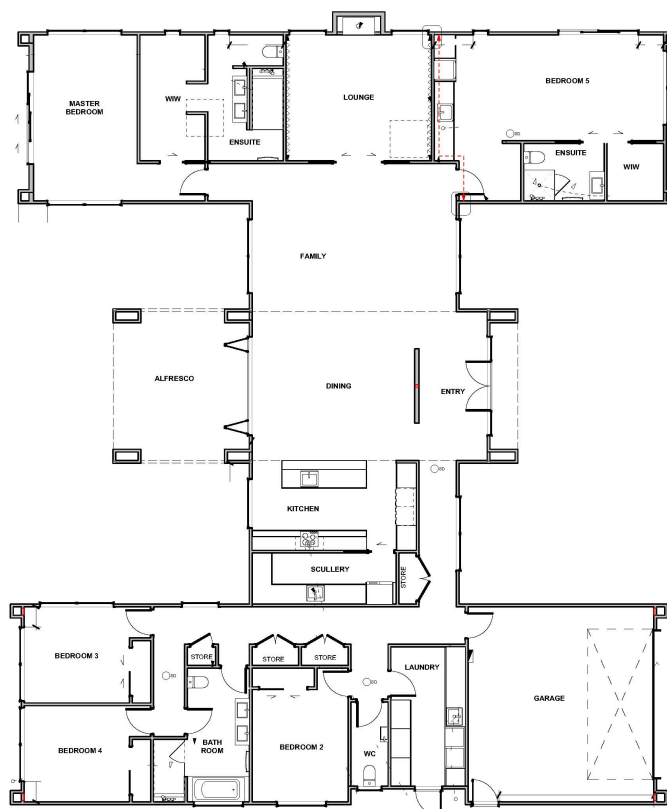
2025 Jennian Homes Canterbury House Of The Year Entry - Space to Share

 5	 3	 2	 4	 2
---	---	---	---	---

Set against the alpine backdrop of Methven, this 363sqm home brings together family living and thoughtful design in one highly liveable package. The layout is anchored by a generous open-plan space that invites connection – from casual dinners to celebratory gatherings. A pitched ceiling and full-height glazing in the living zone elevate the everyday, offering views across the lawn to the mountains beyond. The kitchen is equally inviting with a textured island, warm timber cabinetry and a scullery tucked neatly behind. Throughout the house, timber floors, neutral tones and curated details create a cohesive sense of calm.

2025 Jennian Homes Canterbury House Of The Year Entry - Spa Share

363.00m² | 5 bdrm



Living Area

363 m²

The images may show features which may not be included in the standard plan or price. Your local Jennian New Home Consultant will confirm standard features and discuss your ideas. All plans remain the copyright of Jennian Homes.