








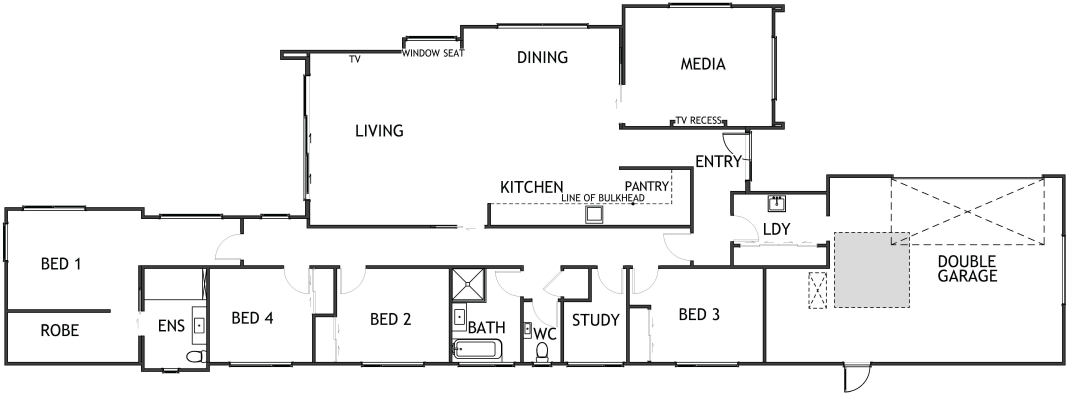
2025 Jennian Homes Canterbury House Of The Year Entry - Making its Presence Felt

Designed to make the most of a challenging narrow site, this 266sqm house is like a gift that keeps on giving. On the way to the front door, you pass a double garage: Tick. A smart exterior combines a concrete façade with vertical weatherboards, a soaring pitched roofline, recessed features and angled glazing that both usher in light and make a statement: More ticks. The pluses keep coming: A high ceiling in the entry draws the eye upward and enhances the sense of space. The long hall that separates the communal spaces from bedrooms, bathrooms and a study is naturally lit with sun tunnels.

 4	 2	 2	 2	 2
---	---	---	---	---

2025 Jennian Homes Canterbury House Of The Year Entry - Making its Presence Felt

266.00m² | 4 bdrms



Living Area 266 m²

The images may show features which may not be included in the standard plan or price. Your local Jennian New Home Consultant will confirm standard features and discuss your ideas. All plans remain the copyright of Jennian Homes.