






House and Land Package

FROM \$955,000

Jennian
HOMES



Sunderland Park - Andrew

 3	 2	 2	 2	 1
---	---	---	---	---

This house and land package features this thoughtful 155m² home designed for efficiency and comfort.

At the heart of this home is the seamless flow of open-plan living and family dining areas. There is a central kitchen, complete with a walk-in pantry and thoughtfully integrated storage, with an easy flow to dining, lounging, and outdoor living for relaxed family time.

Boasting a quality finish throughout, this home features three well-appointed bedrooms, a family bathroom, and a master ensuite.

The section is sunny and north facing, bordering a large recreational reserve in the front.

Central Otago and Queenstown

Level 1, 67 Centennial Ave, Alexandra

P 03 746 7263

E central.otago@jennian.co.nz

jennian.co.nz

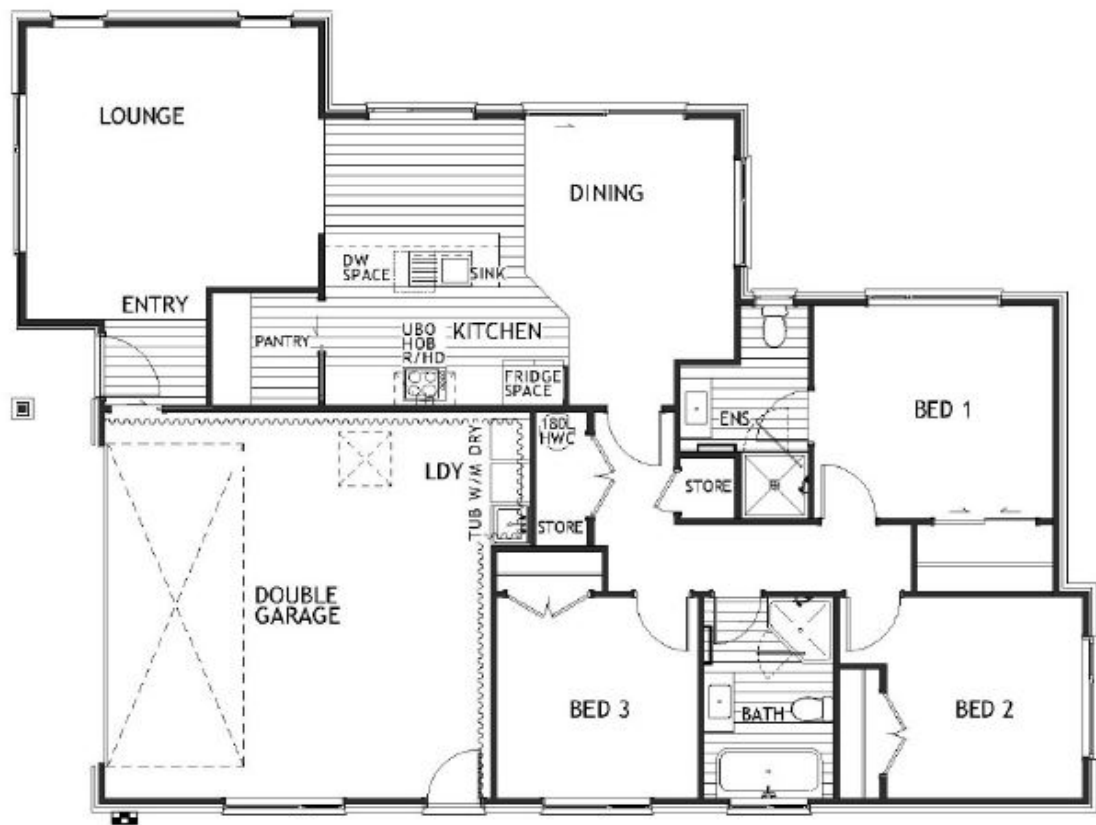
Sarah Cleaver

P 021 520 395

E sarah.cleaver@jennian.co.nz

Sunderland Park - Andrew

155.00m² | 3 bdrm



Living Area	155 m ²
Home Width	11.8 m
Home Length	16.1 m
Land Area	475 m ²

The images may show features which may not be included in the standard plan or price. Your local Jennian New Home Consultant will confirm standard features and discuss your ideas. All plans remain the copyright of Jennian Homes.