

# House and Land Package

## FROM \$972,000

**Jennian**  
HOMES



## Sunderland Park - Amy

 4	 2	 1	 2	 1
---	---	---	---	---

This house and land package features a functional 4-bedroom, 2-bathroom home. Designed with modern family life in mind, this home offers an intuitive layout where kitchen, dining, and living zones flow naturally together. The kitchen features a walk-in pantry, while the open-plan living and dining areas create a welcoming space for everyday life and entertaining.

Generous bedrooms, including a master with ensuite and walk-in wardrobe, provide comfort and privacy. The main bathroom with a separate toilet adds convenience.

This section is sunny and north facing, bordering a large recreational reserve in the front.

### Central Otago and Queenstown

Level 1, 67 Centennial Ave, Alexandra

**P** 03 746 7263

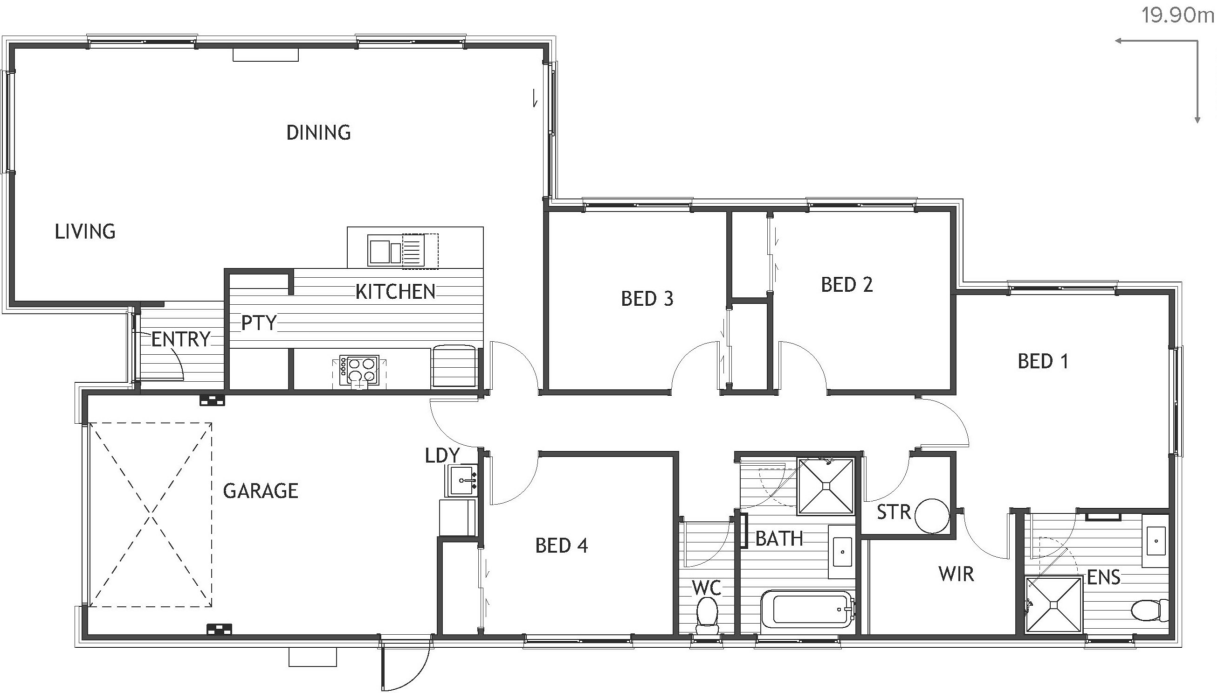
**E** [central.otago@jennian.co.nz](mailto:central.otago@jennian.co.nz)

[jennian.co.nz](http://jennian.co.nz)

### Sarah Cleaver

**P** 021 520 395

**E** [sarah.cleaver@jennian.co.nz](mailto:sarah.cleaver@jennian.co.nz)



Living Area	162 m <sup>2</sup>
Home Width	10.3 m
Home Length	19.9 m
Land Area	475 m <sup>2</sup>

The images may show features which may not be included in the standard plan or price. Your local Jennian New Home Consultant will confirm standard features and discuss your ideas. All plans remain the copyright of Jennian Homes.