




# House and Land Package

## FROM \$942,000

**Jennian**  
HOMES



## Sunderland Park - Marco

 3	 2	 1	 2	 1
---	---	---	---	---

At the heart of this home is its modern open-plan kitchen, complete with a walk-in pantry. The kitchen flows into the open-plan living and dining area. A study nook adds clever functionality to the home.

Generous bedrooms and smart storage complete the package. The master bedroom offers a private retreat with an ensuite and a generous walk-in wardrobe, positioned away from the other bedrooms for added privacy.

The section is sunny and north facing, bordering a large recreational reserve in the front.

### Central Otago and Queenstown

Level 1, 67 Centennial Ave, Alexandra

**P** 03 746 7263

**E** [central.otago@jennian.co.nz](mailto:central.otago@jennian.co.nz)

[jennian.co.nz](http://jennian.co.nz)

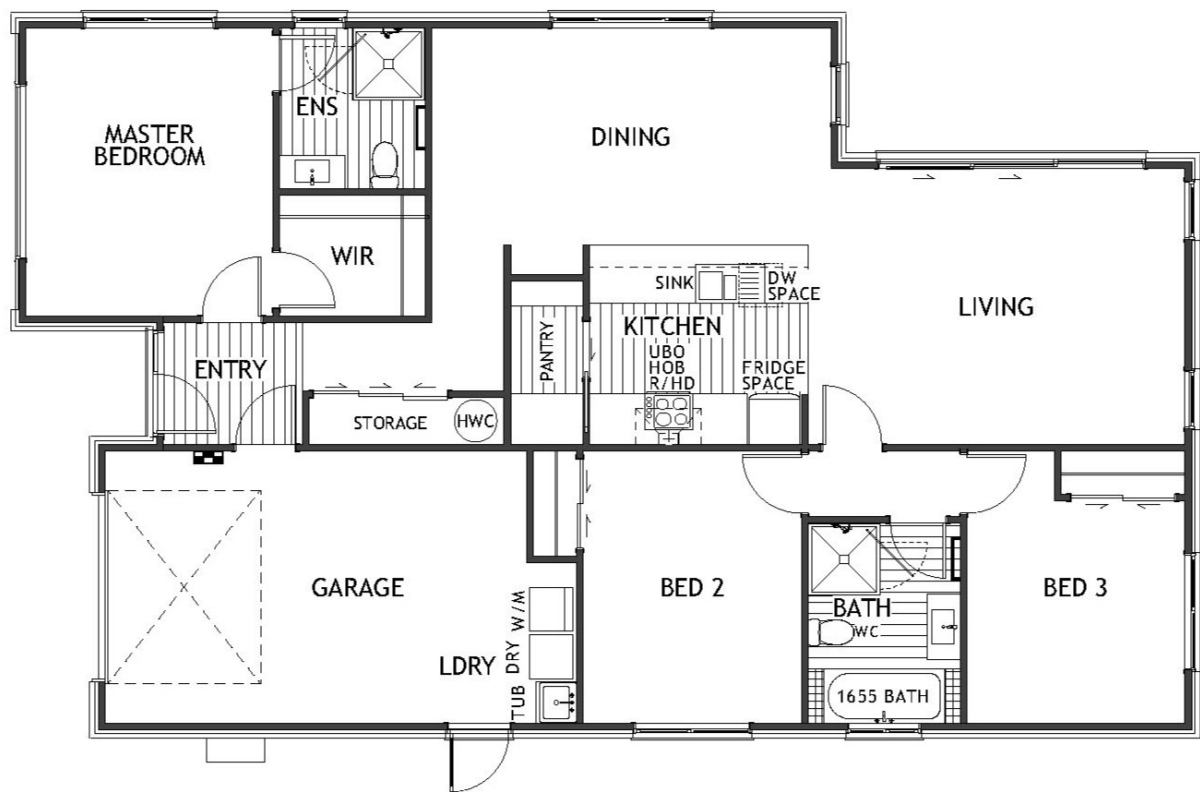
### Sarah Cleaver

**P** 021 520 395

**E** [sarah.cleaver@jennian.co.nz](mailto:sarah.cleaver@jennian.co.nz)

Sunderland Park - Marco

146.00m<sup>2</sup> | 3 bdrm



Living Area	146 m <sup>2</sup>
Home Width	9.98 m
Home Length	16.37 m
Land Area	475 m <sup>2</sup>

The images may show features which may not be included in the standard plan or price. Your local Jennian New Home Consultant will confirm standard features and discuss your ideas. All plans remain the copyright of Jennian Homes.