

# House and Land Package

## FROM \$779,000

**Jennian**  
HOMES








## 5 Hanmer Crescent, Rangiora, Waimakariri, Canterbury, NZ | House and Land

Set in the sought-after Bellgrove subdivision, this modern 3-bedroom home features light-filled living areas and smart zoning between shared and private spaces. A central open-plan kitchen anchors the design, creating an easy flow to dining, lounging, and outdoor living for relaxed family living.

Build with confidence with Jennian Homes – New Zealand's most awarded building brand. With over 40 years of proven experience and our unmatched completion promise, your new home is in safe hands.

Contact Darren to discuss how Jennian Homes can assist with your new build - on your own section or with a Jennian house and land package.

 3	 2	 2	 2	 1
---	---	---	---	---

### Canterbury

212 Main South Road, Sockburn, Christchurch

**P** 03 741 1436

**E** [canterbury@jennian.co.nz](mailto:canterbury@jennian.co.nz)

[jennian.co.nz](http://jennian.co.nz)

### Darren Kim

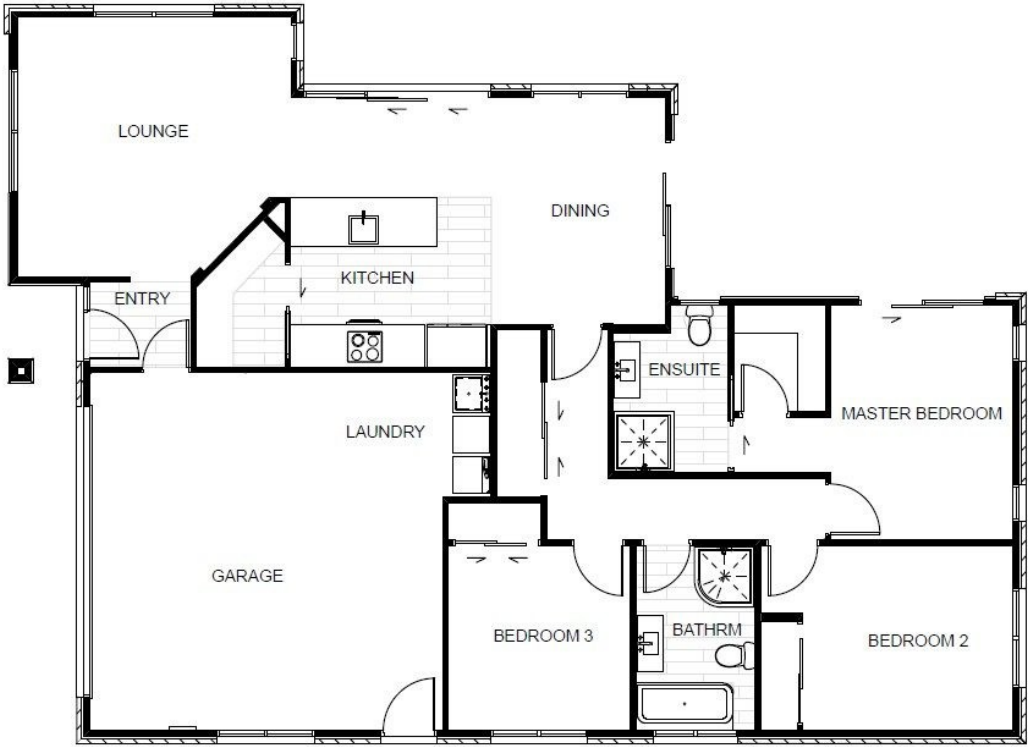
**P** 027 899 7000

**E** [Darren.Kim@jennian.co.nz](mailto:Darren.Kim@jennian.co.nz)

5 Hanmer Crescent, Rangiora, Waimakariri, Canterbury, NZ | House and Land

156.00m<sup>2</sup> | 3 bdrm

 3	 1	 2	 2	 2
---	---	---	---	---



Living Area	156 m <sup>2</sup>
Land Area	378 m <sup>2</sup>

The images may show features which may not be included in the standard plan or price. Your local Jennian New Home Consultant will confirm standard features and discuss your ideas. All plans remain the copyright of Jennian Homes.