

House and Land Package

FROM \$665,000

Jennian
HOMES








**Lot 765, Ellmers Street,
Stage 5B, Ravenswood,
Woodend, NZ | House and
Land**

Modern Elegance Meets Effortless Living

Step into this thoughtfully designed 130sq/m home, where contemporary comfort blends seamlessly with style. The spacious open-plan living areas, overlooking lush greenery, are bathed in warm north-facing sunlight, offering the perfect space to relax or entertain.

Crafted for quality, this home features 2 bedrooms, 2 bathrooms, a separate toilet, and a double garage, all designed to maximize convenience and sophistication. Enjoy seamless indoor-outdoor flow, premium appliances, and the year-round comfort of a heat pump, ensuring an inviting atmosphere in every season.

 2	 2	 2	 3	 2
---	---	---	---	---

Canterbury

212 Main South Road, Sockburn, Christchurch

P 03 741 1436

E canterbury@jennian.co.nz

jennian.co.nz

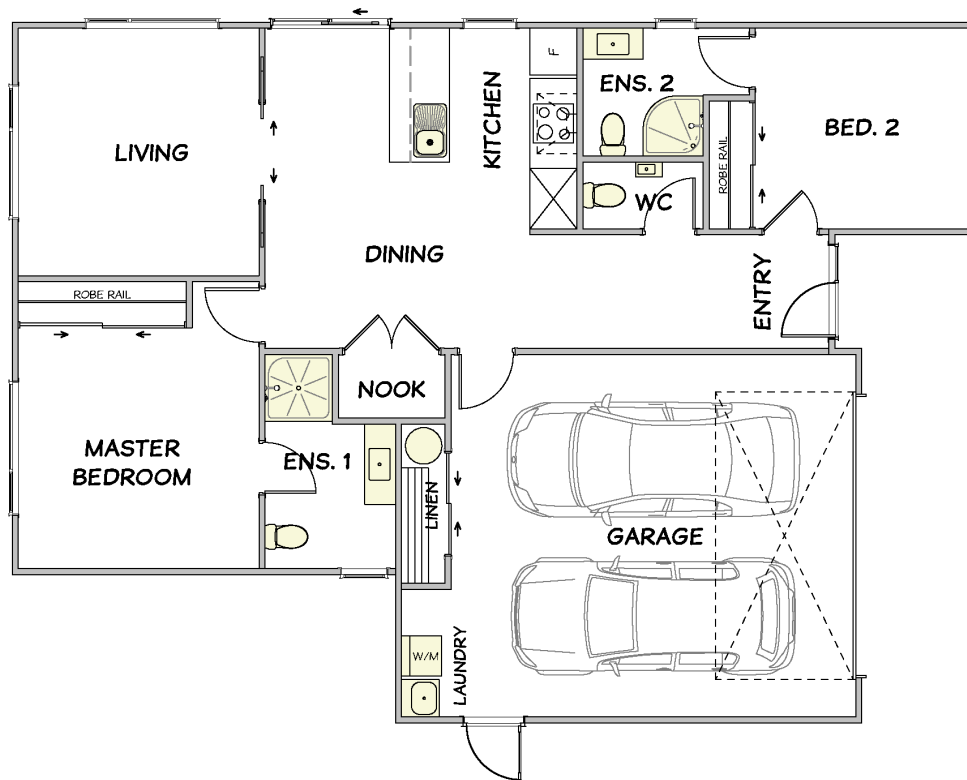
Blair Fergus

P 021 743 383

E blair.fergus@jennian.co.nz

Lot 765, Ellmers Street, Stage 5B, Ravenswood, Woodend, NZ | House and Land

130.00m² | 2 bdrm



Living Area

130 m²

The images may show features which may not be included in the standard plan or price. Your local Jennian New Home Consultant will confirm standard features and discuss your ideas. All plans remain the copyright of Jennian Homes.